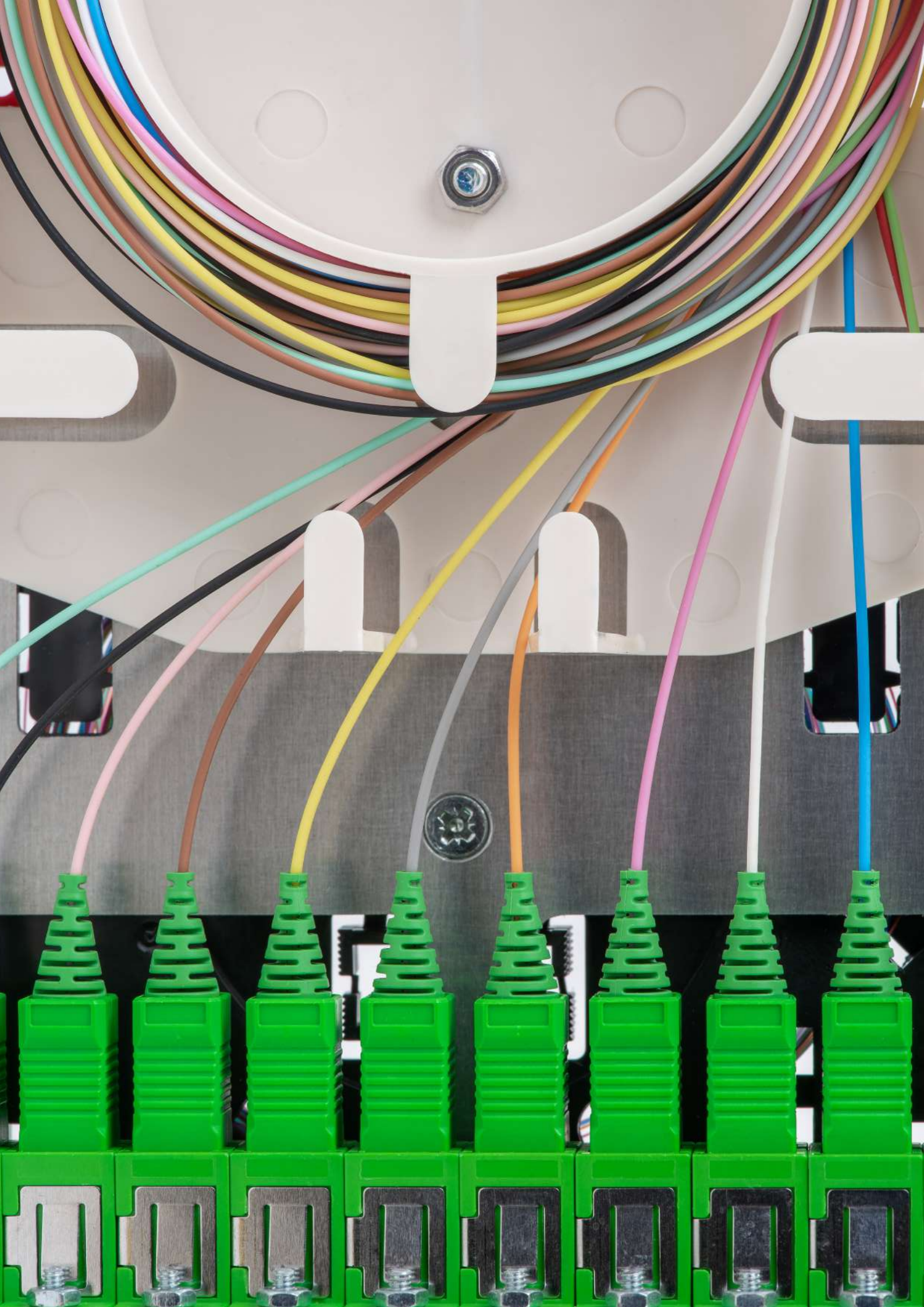




Fiber Optic Assemblies Product Catalogue



STAY CONNECTED!
www.datacor-connectivity.ro



Datacor

For 20 years, we have been helping people communicate easier.

Datacor is a Romanian company, with 20 years of experience in innovative communications solutions, security and electrical solutions, operating in the office, retail and industrial segments. From 2002 until now, the company has grown continuously, reaching a team of 100 people and a turnover of 9 million euros.

We know fiber

We've been working with fiber optics for 19 years and we believe that the future telecommunication networks can only be supported by fiber. No other medium offers the bandwidth capacity and speed of transmission offered by fiber optics.

This is why we decided to invest in a production facility for fiber optic connectivity. We want our products to be a part of the digitalization of Europe. In our state-of-the-art production line we manufacture high quality connectivity solutions. We focus on delivering fast lead times and customized solutions for our clients.



20 years of activity

This year, we celebrate 20 years of Datacor, a time in which we've become one of the main providers of communications and security infrastructure solutions in the country.

9 million turnover

We continuously invest in the development of human resources, the digitalization of the company and in the automation of business processes.

100 employees

At Datacor, we think that people are the most important asset of our company. We always do our best to ensure that our team is made up of the best professionals in the field.

5 offices

We have a presence throughout the country: Bistrița, where the administrative and logistical HQ is located, Bucharest, the secondary HQ and Cluj-Napoca, as well as service centers in Iași and Timișoara.

Our people.

We believe that the value of our company lies in the people who represent it.



Călin Brehar
*Chief Production Office
Manager*

Experienced manager in the telecom business industry. Călin oversees production operations.



Alexandru Dorobanțu
Chief Technical

Highly skilled in telecommunications. Young and passionate about technology, Alex develops the product line.



Raul Marina
Product Designer

Raul works closely with the production team and turns problems into working solutions.



Table of Contents

Fiber Pigtails

Connector type: ST	7
Connector type: SC	9
Connector type: LC	9
Connector type: E2000	10
Connector type: FC	10
Pigtail-Sets	10
Custom Fiber Pigtails	11

Fiber Patch Cords

Fiber patch cords parameters	13
Connector type: ST	14
Connector type: SC	15
Connector type: LC	15
Connector type: FC	16
Connector type: E2000	16
Adaptor Cords	17

Fiber Duplex Patch Cords

Fiber patch cords parameters	18
Connector type: SC	19
Connector type: ST	20
Connector type: LC	20
Connector type: FC	21
Connector type: E2000	21
Duplex Adaptor Cords	21
Custom Simplex and Duplex Patch Cords	22

Fiber Optic Patch Panels

Main Features	24
Custom Patch Panels	26
FTTH Solutions	27

28

Fiber Pigtails



Fiber pigtails parameters

Fiber type	OS2	OM2	OM3	OM4
Mechanical Specifications				
Fire load	0.15 MJ/m	0.016 MJ/m	0.016 MJ/m	0.016 MJ/m
Min. bend radius installation	30 mm	7.5 mm	7.5 mm	7.5 mm
Min. bend radius operation	30 mm	7.5 mm	7.5 mm	7.5 mm
Nominal outer diameter	0.9 mm			
General Specifications				
Fiber Count	1			
Fiber Core Diameter	9 µm	50 µm	50 µm	50 µm
Fiber type	9/125 OS2	50 µm	50 µm	50 µm
Outer Jacket Colour	Yellow	Green	Aqua	Aqua
Fiber Colour	Natural			
Environment	Indoor			
Cable type	Tight-buffered			
Weight	0.95 kg/km			
Application	Splicing			
Temperature range				
storage	-25°C to 70°C			
installation	-5°C to 50°C			
operation	-20°C to 60°C			
Optical characteristics				
Serial 1 gigabit ethernet	5000 MHz*km	700/500 MHz*km	1100/600 MHz*km	1100/600 MHz*km
Serial 10 gigabit ethernet	10000/40000 MHz*km	150 MHz*km	300/333 MHz*km	550 MHz*km
Typical attenuation	0.38 dB/km / 0.38 dB/km / 0.25 dB/km	2.4 dB/km / 0.8 dB/km	2.4 dB/km / 0.8 dB/km	2.4 dB/km / 0.8 dB/km
Wavelengths	1310 nm / 1383 nm / 1550 nm	850 nm / 1300 nm	850 nm / 1300 nm	850 nm / 1300 nm
Connector parameters				
Connector types	LC, SC, ST, FC, E2000			
Insertion Loss (acc. IEC 61300-3-4 method B)	<0.25dB (@1310/1550 nm) <0.25dB (@850/1300 nm)			
Return Loss (acc. IEC 61300-3-6)	>50dB(UPC)/>60dB(APC) @1310/1550 nm >30dB @850/1300 nm			

- Fibre pigtails are used in permanent connections between patch panels and incoming cables or single blown fibres.
- Pigtailed are preconstructed with connectors. Our connector options include small form factors such as LC or E2000 as well as SC, FC and ST.
- We are able to offer this product in many types of configurations with various lengths and multiple colours for easier identification.
- Easy to strip up to 1000 mm.
- Tight buffers allow easy and direct field connectorization.

Connector type: ST


Order no.	Fiber type	Connector type	Jacket colour	Length (m)
DTC-PG-95-Pxxx	E9/125/OS2	ST/PC	Yellow	1; 1,5; 2; 2,5; 3
DTC-PG-25-Pxxx	G50/125/OM2	ST/PC	Green	1; 1,5; 2; 2,5; 3

Connector type: SC


Order no.	Fiber type	Connector type	Jacket colour	Length (m)
DTC-PG-91-Pxxx	E9/125/OS2	SC/PC	Yellow	1; 1,5; 2; 2,5; 3
DTC-PG-9A-Pxxx	E9/125/OS2	SC/APC	Yellow	1; 1,5; 2; 2,5; 3
DTC-PG-2E-Pxxx	G50/125/OM2	SC/PC	Green	1; 1,5; 2; 2,5; 3
DTC-PG-3E-Pxxx	G50/125/OM3	SC/PC	Aqua	1; 1,5; 2; 2,5; 3
DTC-PG-4E-Pxxx	G50/125/OM4	SC/PC	Aqua	1; 1,5; 2; 2,5; 3

Connector type: LC



Order no.	Fiber type	Connector type	Jacket colour	Length (m)
DTC-PG-92-Pxxx	E9/125/OS2	LC/PC	Yellow	1; 1,5; 2; 2,5; 3
DTC-PG-9B-Pxxx	E9/125/OS2	LC/APC	Yellow	1; 1,5; 2; 2,5; 3
DTC-PG-26-Pxxx	G50/125/OM2	LC/PC	Green	1; 1,5; 2; 2,5; 3
DTC-PG-36-Pxxx	G50/125/OM3	LC/PC	Aqua	1; 1,5; 2; 2,5; 3
DTC-PG-46-Pxxx	G50/125/OM4	LC/PC	Aqua	1; 1,5; 2; 2,5; 3

Connector type: FC



Order no.	Fiber type	Connector type	Jacket colour	Length (m)
DTC-PG-94-Pxxx	E9/125/OS2	FC/PC	Yellow	1; 1,5; 2; 2,5; 3
DTC-PG-9D-Pxxx	E9/125/OS2	FC/APC	Yellow	1; 1,5; 2; 2,5; 3

Connector type: E2000

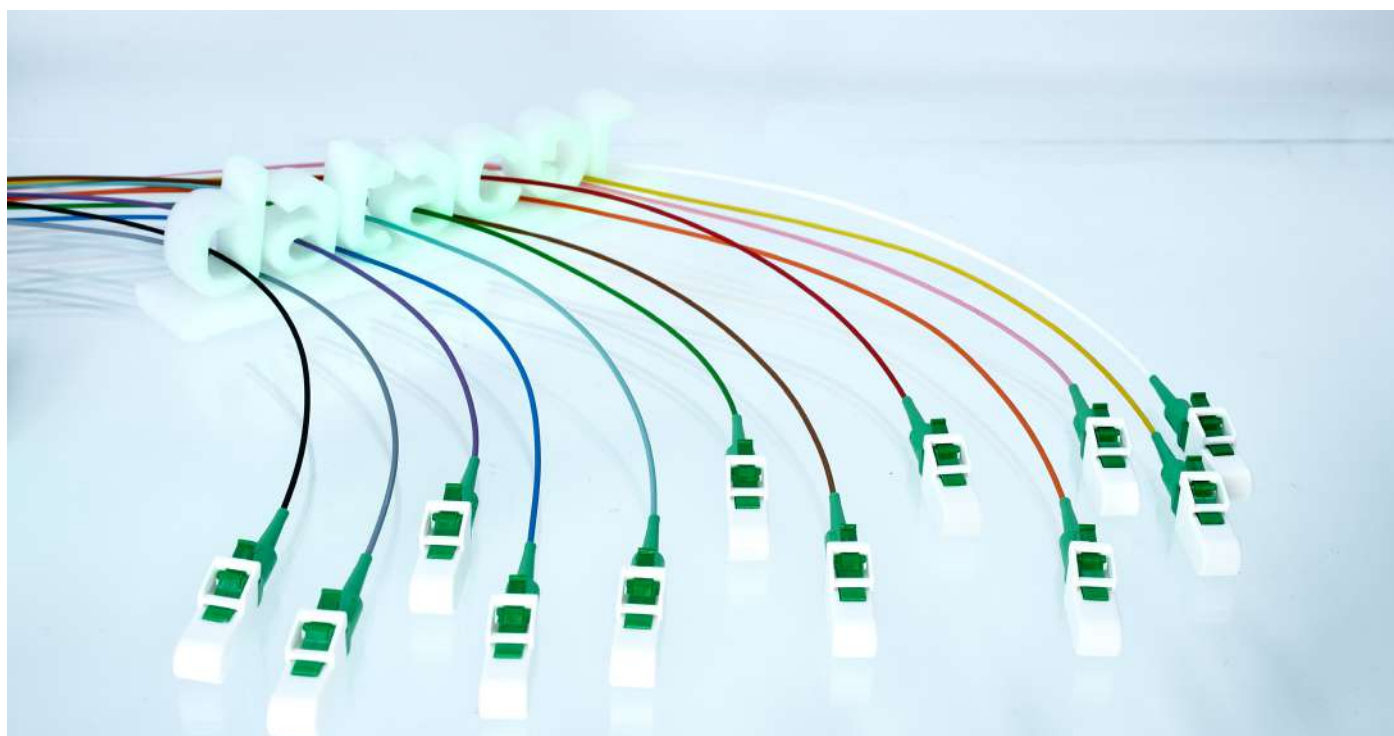


Order no.	Fiber type	Connector type	Jacket colour	Length (m)
DTC-PG-93-Pxxx	E9/125/OS2	E2000/PC	Yellow	1; 1,5; 2; 2,5; 3
DTC-PG-9C-Pxxx	E9/125/OS2	E2000/APC	Yellow	1; 1,5; 2; 2,5; 3

Pigtail-Sets

Description	Pigtails	Housing colour	Length (m)
Pigtail-Set	6 or 12 x E9/125, OS2, ST/PC	Metal	1; 1,5; 2; 2,5; 3
Pigtail-Set	6 or 12 x G50/125, OM2, ST/PC	Metal	1; 1,5; 2; 2,5; 3
Pigtail-Set	6 or 12 x E9/125, OS2, SC/PC	Blue	1; 1,5; 2; 2,5; 3
Pigtail-Set	6 or 12 x E9/125, OS2, SC/APC	Green	1; 1,5; 2; 2,5; 3
Pigtail-Set	6 or 12 x G50/125, OM2, SC/PC	Beige	1; 1,5; 2; 2,5; 3
Pigtail-Set	6 or 12 x G50/125, OM3, SC/PC	Beige	1; 1,5; 2; 2,5; 3
Pigtail-Set	6 or 12 x G50/125, OM4, SC/PC	Beige	1; 1,5; 2; 2,5; 3
Pigtail-Set	6 or 12 x E9/125, OS2, LC/PC	Blue	1; 1,5; 2; 2,5; 3
Pigtail-Set	6 or 12 x E9/125, OS2, LC/APC	Green	1; 1,5; 2; 2,5; 3
Pigtail-Set	6 or 12 x G50/125, OM2, LC/PC	Beige	1; 1,5; 2; 2,5; 3
Pigtail-Set	6 or 12 x G50/125, OM3, LC/PC	Beige	1; 1,5; 2; 2,5; 3
Pigtail-Set	6 or 12 x G50/125, OM4, LC/PC	Beige	1; 1,5; 2; 2,5; 3
Pigtail-Set	6 or 12 x E9/125, OS2, FC/PC	Blue	1; 1,5; 2; 2,5; 3
Pigtail-Set	6 or 12 x E9/125, OS2, FC/APC	Green	1; 1,5; 2; 2,5; 3
Pigtail-Set	6 or 12 x E9/125, OS2, E2000/PC	Blue	1; 1,5; 2; 2,5; 3
Pigtail-Set	6 or 12 x E9/125, OS2, E2000/APC	Green	1; 1,5; 2; 2,5; 3

- We are offering sets of pigtails number of 6 or 12.
- Other type of pigtail sets can be available on request.



Custom Fiber Pigtails

DTC PG 9 1 P 015

Company identifier		Product type		Fiber type	
DTC	Datacor	PG	Pigtail	9	OS2
				1	OM1
				2	OM2
				3	OM3
				4	OM4

Connector type	
1	SC/PC
A	SC/APC
2	LC/PC
B	LC/APC
3	E2000/PC
C	E2000/APC
4	FC/PC
D	FC/APC
5	ST/PC
E	SC/MM
6	LC/MM
F	ST/MM

Series		Length	
S	Standard	010	1.0 m
P	Premium	015	1.5 m
		020	2.0 m
		025	2.5 m
		030	3.0 m

***DTC-PG-91-P015**

***Datacor, Pigtail, OS2, SC/PC , Premium Series, 1.5 m**

Fiber Patch Cords



Fiber patch cords parameters

Fiber type	OS2
Mechanical Specifications	
Crush resistance	1000 N/10 cm
Fire load	0.08 MJ/m
Min. bend radius installation	30 mm
Min. bend radius operation	30 mm
Nominal outer diameter	2.0 mm
General Specifications	
Fiber Count	1
Fiber Core Diameter	9 μ m
Fiber type	9/125 OS2
Outer Jacket Colour	Yellow
Fiber Colour	Natural
Environment	Indoor
Cable type	Tight-buffered
Weight	4.1 kg/km
Application	Indoor Horizontal
Temperature range	
storage	-25°C to 70°C
installation	-5°C to 50°C
operation	-20°C to 60°C
Optical characteristics	
Serial 1 gigabit ethernet	5000 MHz*km
Serial 10 gigabit ethernet	10000/40000 MHz*km
Typical attenuation	0.38 dB/km / 0.38 dB/km / 0.25 dB/km
Wavelengths	1310 nm / 1383 nm / 1550 nm
Connector parameters	
Connector types	LC, SC, ST, FC, E2000
Insertion Loss (acc. IEC 61300-3-4 method B)	<0.25dB (@1310/1550 nm) <0.25dB (@850/1300 nm)
Return Loss (acc. IEC 61300-3-6)	>50dB(UPC)/>60dB(APC) @1310/1550 nm >30dB @850/1300 nm

- Patch cords are used for non-permanent connections between patch-panels and transmission equipment.
- Patch cords provide easy installation in space-constrained areas and can eliminate the need for fan-out kits.
- We are able to offer this product in many types of configurations with various lengths and different connectors.
- Small diameter and bend radius.
- TB3 tight-buffered construction.

Connector type: ST



Order no.	Fiber type	Connector type	Jacket colour	Length (m)
DTC-PC1-29-55-Pxxx	E9/125/OS2	ST/PC	Yellow	1; 1,5; 2; 2,5; 3; 5; 10

Connector type: SC



Order no.	Fiber type	Connector type	Jacket colour	Length (m)
DTC-PC1-29-11-Pxxx	E9/125/OS2	SC/PC	Yellow	1; 1,5; 2; 2,5; 3; 5; 10
DTC-PC1-29-AA-Pxxx	E9/125/OS2	SC/APC	Yellow	1; 1,5; 2; 2,5; 3; 5; 10

Connector type: LC



Order no.	Fiber type	Connector type	Connector housing colour	Length (m)
DTC-PCI-29-22-Pxxx	E9/125/OS2	LC/PC	Blue	1; 1,5; 2; 2,5; 3; 5; 10
DTC-PCI-29-BB-Pxxx	E9/125/OS2	LC/APC	Green	1; 1,5; 2; 2,5; 3; 5; 10

Connector type: FC



Order no.	Fiber type	Connector type	Connector housing colour	Length (m)
DTC-PCI-29-44-Pxxx	E9/125/OS2	FC/PC	Blue	1; 1,5; 2; 2,5; 3; 5; 10
DTC-PCI-29-DD-Pxxx	E9/125/OS2	FC/APC	Green	1; 1,5; 2; 2,5; 3; 5; 10

Connector type: E2000

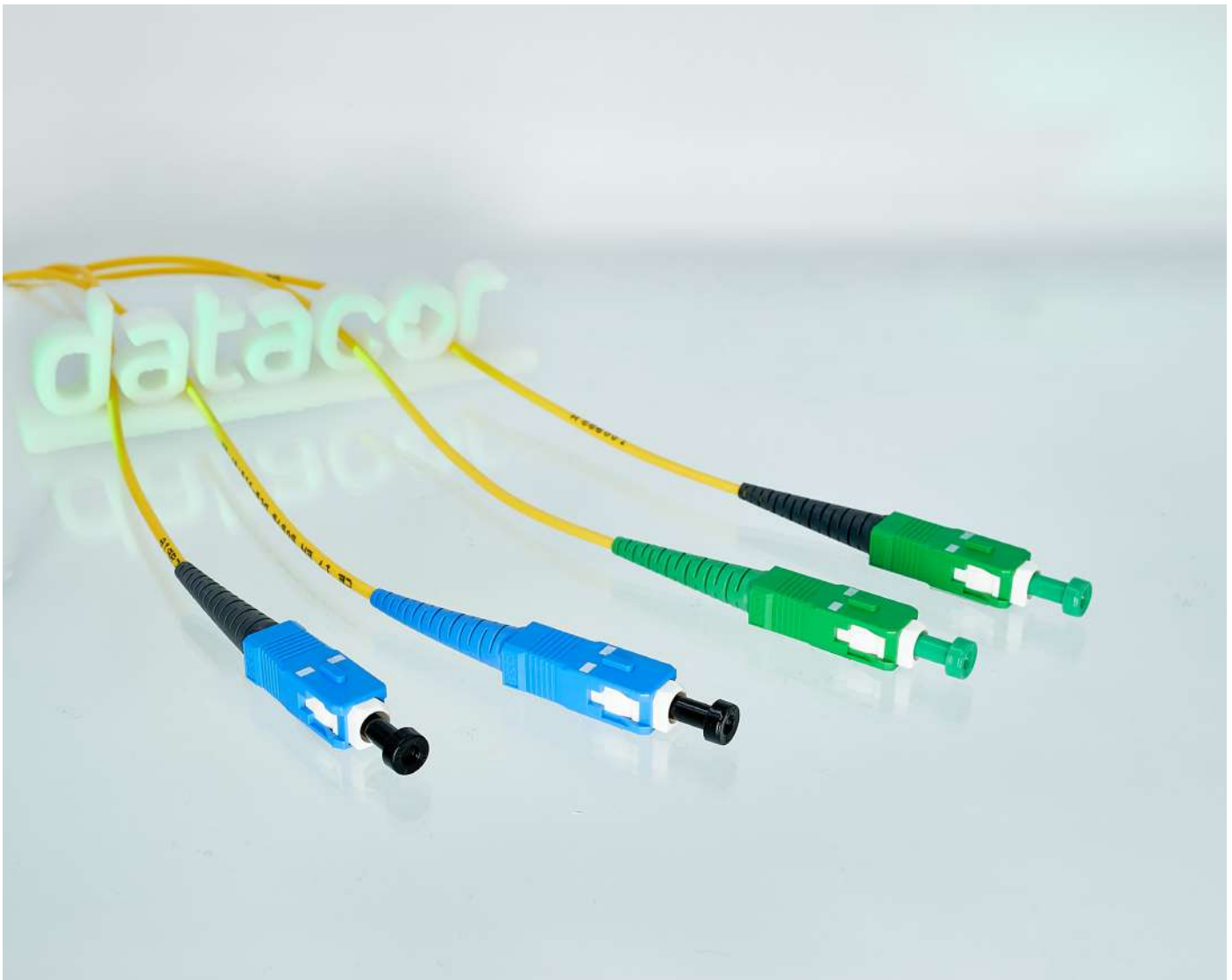


Order no.	Fiber type	Connector type	Connector housing colour	Length (m)
DTC-PCI-29-33-Pxxx	E9/125/OS2	E2000/PC	Blue	1; 1,5; 2; 2,5; 3; 5; 10
DTC-PCI-29-CC-Pxxx	E9/125/OS2	E2000/APC	Green	1; 1,5; 2; 2,5; 3; 5; 10

Adaptor Cords

Order no.	Fiber type	Connector type		Connector housing colour		Length (m)
		Side A	Side B	Side A	Side B	
DTC-PCI-29-1A-Pxxx	Single-mode	SC/PC	SC/APC	Blue	Green	1; 1,5; 2; 2,5; 3; 5; 10
DTC-PCI-29-14-Pxxx	Single-mode	SC/PC	FC/PC	Blue	Blue	1; 1,5; 2; 2,5; 3; 5; 10
DTC-PCI-29-2B-Pxxx	Single-mode	LC/PC	LC/APC	Blue	Green	1; 1,5; 2; 2,5; 3; 5; 10
DTC-PCI-29-BA-Pxxx	Single-mode	LC/APC	SC/APC	Green	Green	1; 1,5; 2; 2,5; 3; 5; 10
DTC-PCI-29-21-Pxxx	Single-mode	LC/PC	SC/PC	Blue	Blue	1; 1,5; 2; 2,5; 3; 5; 10
DTC-PCI-29-2A-Pxxx	Single-mode	LC/PC	SC/APC	Blue	Green	1; 1,5; 2; 2,5; 3; 5; 10

Other combination of connectors can be made on request.



Fiber Duplex Patch Cords



Fiber patch cords parameters

Fiber type	OS2	OM2	OM3	OM4
Mechanical Specifications				
Fire load	0.30 MJ/m	0.11 MJ/m	0.11 MJ/m	0.11 MJ/m
Min. bend radius installation	30 mm			
Min. bend radius operation	10 mm			
Crush resistance	1000 N/10 cm			
Nominal outer diameter	2.0 x 4.1 mm	1.8 x 3.7 mm	1.8 x 3.7 mm	1.8 x 3.7 mm
General Specifications				
Fiber Count	2			
Fiber Core Diameter	9 µm	50 µm	50 µm	50 µm
Fiber type	9/125 OS2	50 µm MM	50 µm MM	50 µm MM
Outer Jacket Colour	White	Orange	Turquoise	Turquoise
Tight Buffer Colour	Blue, Orange			
Environment	Indoor			
Cable type	Zipcord Tight-Buffered			
Weight	OS2 - 8.5 kg/km / OM2, OM3, OM 4 - 6kg/km			
Application	Indoor Horizontal			
Temperature range				
storage	-25°C to 70°C			
installation	-5°C to 50°C			
operation	-20°C to 60°C			
Optical characteristics				
Serial 1 gigabit ethernet	-	700/500 MHz*km	1100/600 MHz*km	1100/600 MHz*km
Serial 10 gigabit ethernet	-	150 MHz*km	300/333 MHz*km	550 MHz*km
Typical attenuation	0.34 dB/km / 0.34 dB/km / 0.20 dB/km	2.4 dB/km / 0.8 dB/km	2.4 dB/km / 0.8 dB/km	2.4 dB/km / 0.8 dB/km
Wavelengths	1310 nm / 1550 nm	850 nm / 1300 nm	850 nm / 1300 nm	850 nm / 1300 nm
Connector parameters				
Connector types	LC, SC, ST, FC, E2000			
Insertion Loss (acc. IEC 61300-3-4 method B)	<0.25dB (@1310/1550 nm) <0.25dB (@850/1300 nm)			
Return Loss (acc. IEC 61300-3-6)	>50dB(UPC)/>60dB(APC) @1310/1550 nm >30dB @850/1300 nm			

- Patch cords are used for non-permanent connections between patch-panels and transmission equipment.
- Patch cords provide easy installation in space-constrained areas and can eliminate the need for fan-out kits.
- We are able to offer this product in many types of configurations with various lengths and different connectors.
- Small diameter and bend radius.
- TB3 tight-buffered construction.

Connector type: ST



Order no.	Fiber type	Connector type	Housing Colour	Length (m)
DTC-PC2-82-FF-Pxxx	G50/125/OM2	ST/PC	Metal	1; 1,5; 2; 2,5; 3; 5; 10

Connector type: SC



Order no.	Fiber type	Connector type	Housing colour	Length (m)
DTC-PC2-29-II-Pxxx	E9/125/OS2	SC/PC	Blue	1; 1,5; 2; 2,5; 3; 5; 10
DTC-PC2-29-AA-Pxxx	E9/125/OS2	SC/APC	Green	1; 1,5; 2; 2,5; 3; 5; 10
DTC-PC2-82-EE-Pxxx	G50/125/OM2	SC/PC	Beige	1; 1,5; 2; 2,5; 3; 5; 10
DTC-PC2-83-EE-Pxxx	G50/125/OM3	SC/PC	Beige	1; 1,5; 2; 2,5; 3; 5; 10
DTC-PC2-84-EE-Pxxx	G50/125/OM4	SC/PC	Beige	1; 1,5; 2; 2,5; 3; 5; 10

Connector type: LC



Order no.	Fiber type	Connector type	Housing colour	Length (m)
DTC-PC2-29-22-Pxxx	E9/125/OS2	LC/PC	Blue	1; 1,5; 2; 2,5; 3; 5; 10
DTC-PC2-29-BB-Pxxx	E9/125/OS2	LC/APC	Green	1; 1,5; 2; 2,5; 3; 5; 10
DTC-PC2-82-66-Pxxx	G50/125/OM2	LC/PC	Beige	1; 1,5; 2; 2,5; 3; 5; 10
DTC-PC2-83-66-Pxxx	G50/125/OM3	LC/PC	Beige	1; 1,5; 2; 2,5; 3; 5; 10
DTC-PC2-84-66-Pxxx	G50/125/OM4	LC/PC	Beige	1; 1,5; 2; 2,5; 3; 5; 10

Connector type: FC



Order no.	Fiber type	Connector type	Housing colour	Length (m)
DTC-PC2-29-44-Pxxx	E9/125/OS2	FC/PC	Blue	1; 1,5; 2; 2,5; 3; 5; 10
DTC-PC2-29-DD-Pxxx	E9/125/OS2	FC/APC	Green	1; 1,5; 2; 2,5; 3; 5; 10

Connector type: E2000



Order no.	Fiber type	Connector type	Housing Colour	Length (m)
DTC-PC2-29-33-Pxxx	E9/125/OS2	E2000/PC	Blue	1; 1,5; 2; 2,5; 3; 5; 10
DTC-PC2-29-CC-Pxxx	E9/125/OS2	E2000/APC	Green	1; 1,5; 2; 2,5; 3; 5; 10

Duplex Adaptor Cords

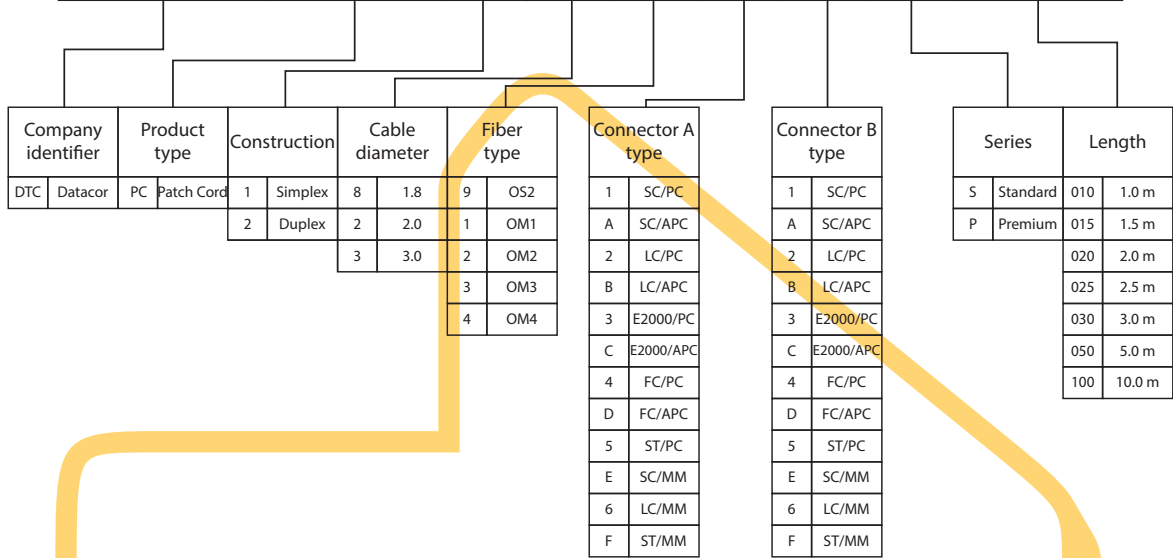
Order no.	Fiber type	Connector type		Connector housing colour		Length (m)
		Side A	Side B	Side A	Side B	
DTC-PC2-29-1A-Pxxx	Single-mode	SC/PC	SC/APC	Blue	Green	1; 1,5; 2; 2,5; 3; 5; 10
DTC-PC2-29-14-Pxxx	Single-mode	SC/PC	FC/PC	Blue	Metal	1; 1,5; 2; 2,5; 3; 5; 10
DTC-PC2-29-21-Pxxx	Single-mode	LC/PC	SC/PC	Blue	Blue	1; 1,5; 2; 2,5; 3; 5; 10
DTC-PC2-29-2A-Pxxx	Single-mode	LC/PC	SC/APC	Blue	Green	1; 1,5; 2; 2,5; 3; 5; 10
DTC-PC2-29-24-Pxxx	Single-mode	LC/PC	FC/PC	Blue	Metal	1; 1,5; 2; 2,5; 3; 5; 10
DTC-PC2-82-EF-Pxxx	OM2	SC/PC	ST/PC	Beige	Metal	1; 1,5; 2; 2,5; 3; 5; 10
DTC-PC2-82-6F-Pxxx	OM2	LC/PC	ST/PC	Beige	Metal	1; 1,5; 2; 2,5; 3; 5; 10
DTC-PC2-82-6E-Pxxx	OM2	LC/PC	SC/PC	Beige	Beige	1; 1,5; 2; 2,5; 3; 5; 10
DTC-PC2-83-6E-Pxxx	OM3	LC/PC	SC/PC	Beige	Beige	1; 1,5; 2; 2,5; 3; 5; 10
DTC-PC2-84-6E-Pxxx	OM4	LC/PC	SC/PC	Beige	Beige	1; 1,5; 2; 2,5; 3; 5; 10

Other combination of connectors can be made on request.



Custom Simplex and Duplex Patch Cords

DTC PC 1 2 9 2 B P 030



***DTC-PC1-29-2B-P030**

*Datacor, Patch Cord Simplex, 2 mm, OS2, connector A: LC/PC; connector B: LC/APC; Premium Series, 3.0 m

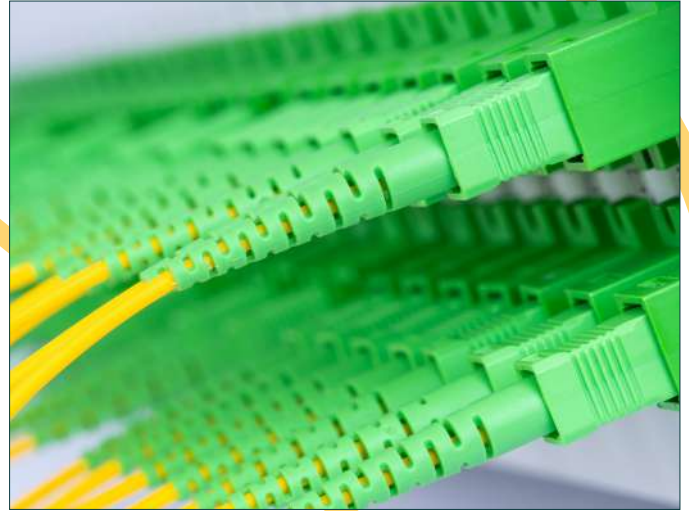
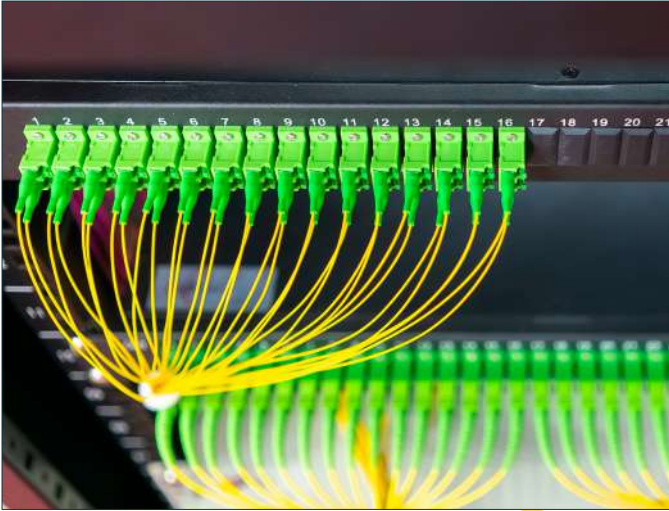
Fiber Optic Patch Panels



Fiber optic Patch Panels - 1U

Product information

Fiber Optic Patch Panel 19" - 1U



Application

This fiber optic patch panel combines clever design with quality materials in order to deliver a complete product made to ease the work of anyone who gets their hands on it.

The fibre optic panel is an essential connectivity component in all networks when proper protection of transmission infrastructure is of great importance. It is intended for quick crossing of connections between distribution points. The perfectly arranged base of the panel, in combination with a wide range of additional accessories, makes this the perfect solution for Data Center systems and wherever connection of optical fibres under difficult installation conditions is required.

Our fiber optic panels are available fully equipped with adapters, pigtails and cassettes. This considerably reduces the installation times both in existent and new network infrastructures.



Fiber optic Patch Panels - 1U

Main Features

- a universal housing and base that allows the drawer to be pulled out
- the base can be removed from the ball bearing slides before installation
- adjustable handles with a possibility of assembly on the front or back of the panel
- a wide range of front plates for various types of adapters, prepared for lock assembly
- rised slots in base for mounting cables and tubes with different outer diameters
- holes in the base for one or two-point assembly of splice tray
- front plates equipped with captive screws
- two pull-out possibilities for the drawer: horizontal and diagonal
- five rear cable entries
- FRP rod termination point
- optional patch cord organizer
- colour: black

Technical Specifications

Height (U)

1

Height (mm)

42

Width (mm)

443

Depth (mm)

241

Weight (kg)

2,4

Colour

black

Custom Patch Panels

DTC2- - - *

1 2 3 4

1 Select fiber count

04 = 4 fibres
 06 = 6 fibres
 08 = 8 fibres
 12 = 12 fibres
 16 = 16 fibres
 24 = 24 fibres
 32 = 32 fibres
 48 = 48 fibres

2 Select connectivity

11 = Simplex single-mode, SC/PC
 1A = Simplex single-mode, SC/APC
 1E = Simplex multi-mode, SC/PC
 1C = Simplex single-mode, E2000/PC
 15 = Simplex single-mode, ST/PC
 14 = Simplex single-mode, FC/PC
 1D = Simplex single-mode, FC/APC
 21 = Duplex single-mode, SC/PC
 2A = Duplex single-mode, SC/APC
 2E = Duplex multi-mode, SC/PC
 22 = Duplex single-mode, LC/PC
 2B = Duplex single-mode, LC/APC
 26 = Duplex multi-mode, LC/PC

3 Select configuration

AD = front panel loaded with adapters only

PG = universal splice pack with 4 to 48 pre-installed coloured pigtails (all accessories included)

4 Select pigtail type*

9 = OS2 (G.652.D)
 5 = OS2 (G.655)
 7 = OS2 (G.657.A2)
 2 = OM2
 3 = OM3
 4 = OM4

Only black housing colour.

**For patch panels equipped with pigtails.*

EXAMPLE 1:

DTC-24-21-PGTL-9

Patch panel, 24 fibres, 12 Duplex, SM, SC/PC adapters, 24 SC/PC, OS2 (G.652.D) pigtails

EXAMPLE 2:

DTC-48-26-PGTL-3

Patch panel, 48 fibres, 24 Duplex, MM, LC/PC adapters, 48 LC/PC, OM3 pigtails

FTTH Solutions

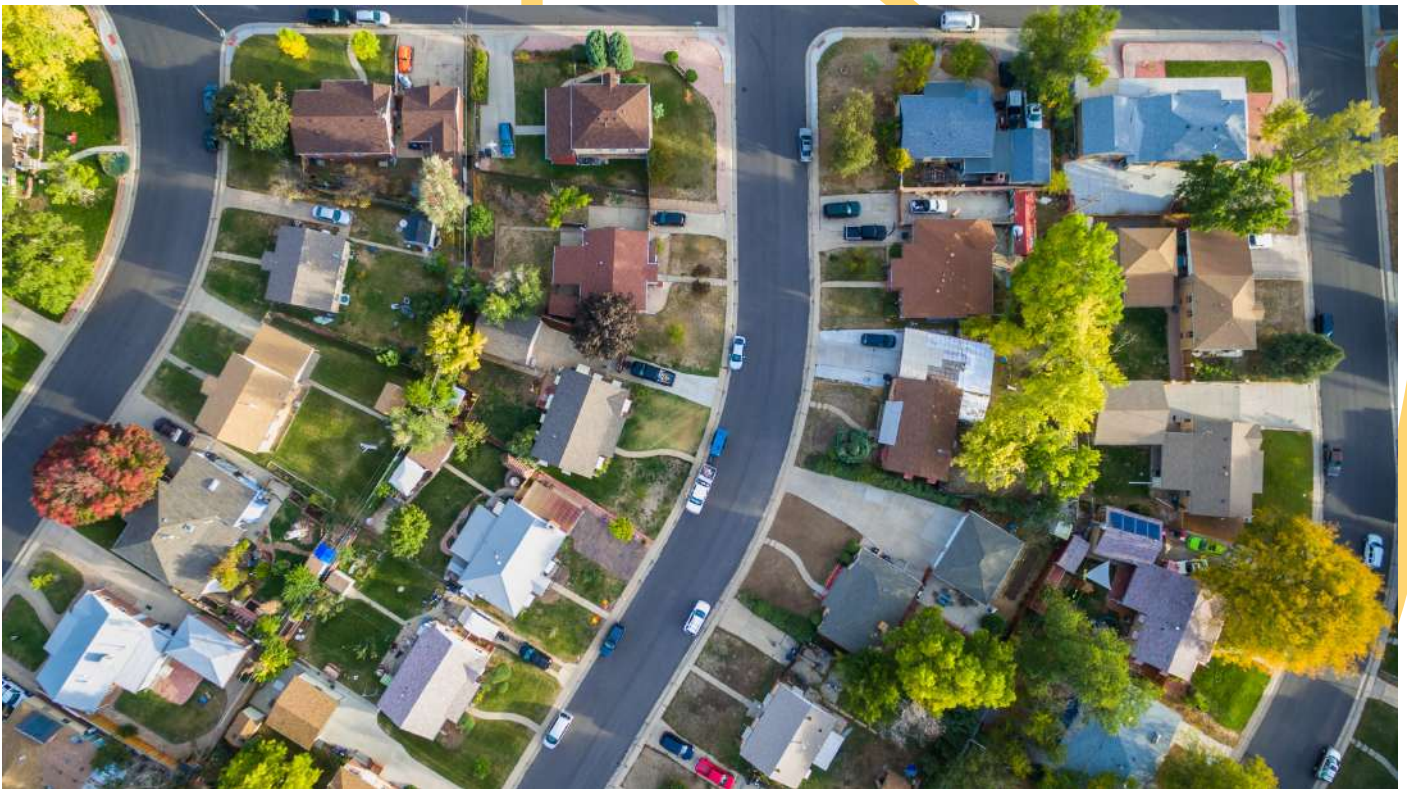


FTTH - Optical Distribution Boxes

Our FTTH solution includes a variety of Optical Distribution Boxes suitable for a different FTTH applications.

They are designed for both indoor and outdoor use, have different connector capacities, lockable lid and can be used as wall or post-mounted.

We offer fully customizable solutions that are both 5G and GPON ready and can satisfy any fiber to the home equipment request.



Custom
izable5G
ready

Wall-mounted fiber distribution box

This fiber distribution box is designed for the placement of 12 optical connectors indoor and outdoor. The distribution box may be complemented by a bracket, which enables it to be post-mounted.

Main Features

- Maximum capacity is 12 × LC (plastic holder) or possibility to install an aluminium adapter holder for 12 × SC simplex
- Integrated fibre management + 1 × splice tray for the placement of optical splices
- 1 × PG bushing for input cable
- 6 × Dividable rubber bushing 2 × 1–3mm
- Use only for fibers G657a, b
- Lockable door

Technical Specifications

Inputs / Outputs (quantity x range)	1 x 5-8.5 mm, 12 x 1-3 mm
Grommets (type and number)	1 x PG9, 6 x rubber grommet
Ingress Protection	IP54
Impact Protection	IK10
UV resistance	Yes
Flammability Degree	V0
Temperature Range	-40 °C / +70 °C
Material	PC / ABS
Colour	Light Gray (RAL 7035)
Dimensions (H x W x D)	216 x 154 x 68 mm
Weight	0.8 kg
Environment	indoor / outdoor
Number of splices	1 - 12
Number of connectors	1 - 12
Connector type	SC



Ordering codes:

DTC3-FDBIII (without adapters and pigtails)

Any custom configurations possible; please contact us at sales@datacor-connectivity.ro

Custom
izable5G
ready

Wall-mounted fiber distribution box

This fiber distribution box is designed for the placement of 24 optical connectors indoor and outdoor. The distribution box may be complemented by a bracket, which enables it to be post-mounted.

Main Features

- | Maximum capacity is 24 × LC or 12 × SC
- | Integrated fibre management + 2 × splice trays for the placement of optical splices
- | Possibility of PLC splitter placement
- | 1 × PG bushing for input cable
- | 1 × PG bushing with rubber insert for output patchcords
- | Lockable door 12 × Dividable rubber bushing 2 × 1–3 mm for output patchcords
- | Use only for fibers G657a, b
- | Lockable door



Technical Specifications

Inputs / Outputs (quantity x range)	24 x 1-3 mm, 1 x 8-12 mm
Grommets (type and number)	12 x rubber grommet, 1 x PG 13.5
Ingress Protection	IP54
Impact Protection	IK10
UV resistance	Yes
Flammability Degree	V0
Temperature Range	-40 °C / +70 °C
Material	PC / ABS
Colour	Light Gray (RAL 7035)
Dimensions (H x W x D)	216 x 154 x 90 mm
Weight	0.9 kg
Environment	indoor / outdoor
Number of splices	13 - 24
Number of connectors	13 - 24
Connector type	SC / LC



Ordering codes:

DTC3-FDBIII2 (without adapters and pigtails)

Any custom configurations possible; please contact us at sales@datacor-connectivity.ro

Custom
izable5G
ready

Wall-mounted fiber distribution box

This fiber distribution box is designed for the placement of 24 optical connectors indoors and outdoors. The distribution box may be complemented by a bracket, which enables it to be post-mounted.

Main Features

- | Maximum capacity of adapters is 12 × SC/DX
- | Integrated fiber management + 2 × splice tray for the placement of optical splices
- | Possibility of PLC splitter placement
- | 1 × PG 13,5 bushing for input cable
- | 12 × Dividable rubber bushing 2 × 1–3 mm for output patchcords
- | Use for fibers G657a, b
- | Lockable door

Technical Specifications

Inputs / Outputs (quantity x range)	24 x 1-3 mm, 1 x 8-12 mm
Grommets (type and number)	12 x rubber grommet, 1 x PG 13.5
Ingress Protection	IP54
Impact Protection	IK10
UV resistance	Yes
Flammability Degree	V0
Temperature Range	-40 °C / +70 °C
Material	PC / ABS
Colour	Light Gray (RAL 7035)
Dimensions (H x W x D)	216 x 154 x 90 mm
Weight	0.9 kg
Environment	indoor / outdoor



Ordering codes:

DTC3-FDB1113 (without adapters and pigtailed)

Any custom configurations possible; please contact us at sales@datacor-connectivity.ro



Wall-mounted fiber distribution box

This fiber distribution box is designed for the placement of 24 optical connectors indoors and outdoors. The distribution box may be complemented by a bracket, which enables it to be postmounted.

Main Features

- | Maximum capacity of adapters is 12 × LC duplex, 12 × SC duplex or 24 SC simplex
- | 2 × splice tray for the placement of optical splices
- | Possibility of PLC splitter placement
- | 2 × PG 13,5 bushing for input cable
- | 12 × Dividable rubber bushing 2 × 1–3 mm for output patchcords;
- | Use for fibers G652d and G657a, b
- | Lockable door

Technical Specifications

Inputs / Outputs (quantity x range)	24 x 1-3 mm, 2 x 8-12 mm
Grommets (type and number)	12 x rubber grommet, 2 x PG 13.5
Ingress Protection	IP54
Impact Protection	IK10
UV resistance	Yes
Flammability Degree	V0
Temperature Range	-40 °C / +70 °C
Material	PC / ABS
Colour	Light Gray (RAL 7035)
Dimensions (H x W x D)	350 x 250 x 68 mm
Weight	1.5 kg
Environment	indoor / outdoor



Ordering codes:

DTC3-FDB1114 (without adapters and pigtailed)

Any custom configurations possible; please contact us at sales@datacor-connectivity.ro

Custom
izable5G
ready

Wall-mounted fiber distribution box

This fiber distribution box is designed for the placement of 48 optical connectors indoor and outdoor. The distribution box may be complemented by a bracket, which enables it to be postmounted.

Main Features

- | Maximum capacity is 48 × SC simplex
- | Integrated fibre management + 2 × splice tray for the placement of optical splices
- | Possibility of PLC splitter placement
- | 2 × PG bushing for input cable
- | 2 × PG bushing with rubber insert for output patchcords
- | Use for fibers G652d, G657a, b
- | Hinged adapter holder for easier manipulation of the adapters
- | Lockable door

Technical Specifications

Inputs / Outputs (quantity x range)	48 x 3 mm, 2 x 8-16 mm
Grommets (type and number)	2 x PG29, 2 x PG 16
Ingress Protection	IP54
Impact Protection	IK10
UV resistance	Yes
Flammability Degree	V0
Temperature Range	-40 °C / +70 °C
Material	PC / ABS
Colour	Light Gray (RAL 7035)
Dimensions (H x W x D)	350 x 250 x 90 mm
Weight	1.9 kg
Environment	indoor / outdoor
Number of splices	25 - 48
Number of connectors	25 - 48
Connector type	SC / LC



Ordering codes:

DTC3-FDB1115 (without adapters and pigtails)

Any custom configurations possible; please contact us at sales@datacor-connectivity.ro



Wall-mounted fiber distribution box

This fiber distribution box is designed for the placement of 24/48 optical connectors indoors and outdoors. The distribution box may be complemented by a bracket, which enables it to be post-mounted.

Main Features

- | Maximum capacity of adapters is 12 × SC simplex or 12 × SC duplex or 12 × LC duplex or 12 × LC QUAD
- | 2 × splice tray for the placement of optical splices
- | Possibility of PLC splitter placement
- | 2 × PG bushing for input cable
- | 24 × Dividable rubber bushing 2 × 1–3 mm for output patchcords
- | Use for fibers G652d and G657a, b
- | Lockable door

Technical Specifications

Inputs / Outputs (quantity x range)	48 x 1-3 mm, 2 x 8-12 mm
Grommets (type and number)	24 x rubber grommet, 2 x PG 13.5
Ingress Protection	IP54
Impact Protection	IK10
UV resistance	Yes
Flammability Degree	V0
Temperature Range	-40 °C / +70 °C
Material	PC / ABS
Colour	Light Gray (RAL 7035)
Dimensions (H x W x D)	250 x 250 x 90 mm
Weight	2.4 kg
Environment	indoor / outdoor



Ordering codes:

DTC3-FDB1116 (without adapters and pigtails)

Any custom configurations possible; please contact us at sales@datacor-connectivity.ro



Custom
 izable

Fiber Access Terminal Box

This Fiber Access Terminal Box is designed to terminate an optical network using 2 to 4 optical fibers at a customer terminal point. It is installed indoors on a wall.

Main Features

- | Capacity 4 optical connectors
- | Connector holder SC simplex or LC duplex
- | Maximum capacity is 4 optical splices
- | Attractive design for indoor usage
- | Installing on a surface or flush-mounting box
- | Simple optical management
- | Direct fiber termination by a connector
- | Standard socket dimensions
- | Input possibility of fiber with connector
- | Possibility of pre-assembled ftth socket to minimize installation time at the customer (FLAT DROP cable - 2 × 3.1 mm)
- | Use only for fibers G657a, b

Technical Specifications

Ingress Protection	IP30 / IP54 (under special conditions)
Impact Protection	IK07
Flammability Degree	HB
Material	ABS
Colour	White (RAL 9003)
Dimensions (H x W x D)	116 x 81 x 25 mm / extended cover 81 x 81 x 25 mm / short cover
Weight	0.08 kg
Environment	indoor
Connector type	SC / LC



Ordering codes:

DTC3-FAT1117 (without adapters and pigtails)

Any custom configurations possible; please contact us at sales@datacor-connectivity.ro



Fiber Optic Box

This Fiber Optic Box is designed for the placement of up to 12 optical splices both indoors and outdoors. The box may be complemented by a simple bracket for being post-mounted.

Main Features

- | Capacity of 12 optical splices
- | Integrated fibre management
- | 1 × splice tray for the placement of optical splices
- | Possibility of PLC splitter placement
- | Placement of optical fiber reserve, length 3 m
- | Fixation of input/output cables
- | 1 × universal rubber bushing (for “omega” and individual inputs/outputs)
- | Lid is fixed with screws
- | Easy assembly
- | Wall-mounted or post-mounted
- | Use only for fibers G657a, b



Technical Specifications

Inputs / Outputs (quantity x range)	9 x 1.8-5 mm, 2 x 3-9 mm
Grommets (type and number)	express port
Ingress Protection	IP54
Impact Protection	IK10
UV resistance	Yes
Flammability Degree	V0
Material	PC / ABS
Colour	Light Gray (RAL 7035)
Dimensions (H x W x D)	136 x 136 x 46 mm
Weight	0.4 kg
Environment	indoor / outdoor
Number of splices	1 - 12
Number of connectors	only splicing

Ordering codes:
DTC3-FOB118



Fiber Optic Box

This Fiber Optic Box is designed for the placement of up to 24 optical splices both indoors and outdoors. The box may be complemented by a simple bracket for being post-mounted.

Main Features

- | Capacity of 24 optical splices
- | Integrated fibre management
- | 2 × splice tray for the placement of optical splices
- | Possibility of PLC splitter placement
- | Placement of optical fiber reserve, length 3 m
- | Fixation of input/output cables
- | 1 × universal rubber bushing (for “omega” and individual inputs/outputs)
- | Lid is fixed with screws
- | Easy assembly
- | Wall-mounted or post-mounted
- | Use only for fibers G657a, b



Technical Specifications

Inputs / Outputs (quantity x range)	9 x 1.8-5 mm, 2 x 3-9 mm
Grommets (type and number)	express port
Ingress Protection	IP54
Impact Protection	IK10
UV resistance	Yes
Flammability Degree	V0
Material	PC / ABS
Colour	Light Gray (RAL 7035)
Dimensions (H x W x D)	136 x 136 x 64 mm
Weight	0.5 kg
Environment	indoor / outdoor
Number of splices	13 - 24
Number of connectors	only splicing

Ordering codes:
DTC3-FOB119



Fiber Optic Box

This Fiber Optic Box is designed for the placement of 2 optical connectors both indoors and outdoors. The box may be complemented by a simple bracket for being post-mounted.

Main Features

- | Capacity up to 2 × SC connector
- | Connector holder SC simplex/duplex
- | Placement of optical fiber reserve, length 1 m
- | Dividable rubber bushing 2 × 1–3 mm
- | Easy assembly
- | Wall-mounted or post-mounted
- | Coverage degree IP 54
- | Use for fibers G657a, b

Technical Specifications

Inputs / Outputs (quantity x range)	4 x 1-3 mm, 1 x 3-6.5 mm
Grommets (type and number)	2 x rubber grommet, 1 x PG7
Ingress Protection	IP54
Impact Protection	IK10
UV resistance	Yes
Flammability Degree	V0
Material	PC / ABS
Colour	Light Gray (RAL 7035)
Dimensions (H x W x D)	136 x 136 x 46 mm
Weight	0.4 kg
Environment	indoor / outdoor
Connector type	SC / LC



Ordering codes:

DTC3-FOB1120 (without adapters and pigtails)

Any custom configurations possible; please contact us at sales@datacor-connectivity.ro





Fiber Optic Box

This Fiber Optic Box is designed for the placement of 4 optical connectors both indoors and outdoors. The box may be complemented by a simple bracket for being post-mounted.

Main Features

- | Capacity up to 4 × SC connector
- | Connector holder SC simplex/duplex
- | Placement of optical fiber reserve, length 1 m
- | Dividable rubber bushing 2 × 1–3 mm
- | Easy assembly
- | Wall-mounted or post-mounted
- | Coverage degree IP 54
- | Use for fibers G657a, b

Technical Specifications

Inputs / Outputs (quantity x range)	4 x 1-3 mm, 1 x 3-6.5 mm
Grommets (type and number)	2 x rubber grommet, 1 x PG7
Ingress Protection	IP54
Impact Protection	IK10
UV resistance	Yes
Flammability Degree	V0
Material	PC / ABS
Colour	Light Gray (RAL 7035)
Dimensions (H x W x D)	136 x 136 x 46 mm
Weight	0.4 kg
Environment	indoor / outdoor
Connector type	SC / LC



Ordering codes:

DTC3-FOB1121 (without adapters and pigtails)

Any custom configurations possible; please contact us at sales@datacor-connectivity.ro





Wall-mounted Fiber Distribution Box

This fiber distribution box is designed for the placement of 4 optical connectors both indoors and outdoors. The distribution box may be complemented by a simple bracket, which enables it to be postmounted.

Main Features

- | Capacity of 4 optical connectors
- | Connector holder SC, ST, FC, E2000, LC
- | Placement of optical fiber reserve, length 1 m
- | PG bushings
- | Easy assembly
- | Wall-mounted or post-mounted
- | Coverage degree IP 54
- | Lockable lid

Technical Specifications

Inputs / Outputs (quantity x range)	4 x 3 mm, 1 x 4-8 mm
Grommets (type and number)	1 x PG9, 2 x PG16
Ingress Protection	IP54
Impact Protection	IK10
UV resistance	Yes
Flammability Degree	V0
Temperature Range	-40 °C / +70 °C
Material	PC / ABS
Colour	Light Gray (RAL 7035)
Dimensions (H x W x D)	216 x 154 x 90 mm
Weight	0.6 kg
Environment	indoor / outdoor
Number of splices	1 - 12
Number of connectors	1 - 12
Connector type	SC / LC / E2000



Ordering codes:

DTC3-FDBI122 (without adapters and pigtails)

Any custom configurations possible; please contact us at sales@datacor-connectivity.ro



Wall-mounted Fiber Distribution Box

This fiber distribution box is designed for the placement of 4 optical DUPLEX connectors both indoors and outdoors. The distribution box may be complemented by a simple bracket, which enables it to be post-mounted.

Main Features

- | Capacity of 8 optical connectors
- | Connector holder LC duplex, E2000 compact, SC duplex
- | Placement of optical fiber reserve, length 1 m
- | PG bushings
- | Easy assembly
- | Wall-mounted or post-mounted
- | Coverage degree IP 54
- | Lockable lid

Technical Specifications

Inputs / Outputs (quantity x range)	8 x 3 mm, 1 x 4-8 mm
Grommets (type and number)	1 x PG9, 2 x PG16
Ingress Protection	IP54
Impact Protection	IK10
UV resistance	Yes
Flammability Degree	V0
Temperature Range	-40 °C / +70 °C
Material	PC / ABS
Colour	Light Gray (RAL 7035)
Dimensions (H x W x D)	185 x 103 x 73 mm
Weight	0.6 kg
Environment	indoor / outdoor
Number of splices	1 - 12
Number of connectors	1 - 12
Connector type	SC / LC / E2000



Ordering codes:

DTC3-FDBII23 (without adapters and pigtails)

Any custom configurations possible; please contact us at sales@datacor-connectivity.ro



Fiber Optic Box

This Fiber Optic Box is a wall mounted closure designed for indoor / outdoor installation for the termination and distribution of optical fibers. The box is mainly suited for FTTH networks. It can be used both in suburban areas with a lower subscriber density (family houses, low apartment buildings or offices) or functions as a floor distribution box in multi-dwelling units (MDUs).

Main Features

- | Capacity of up to 12 splices
- | Capacity of up to 4 × SC / 8 × LC connector
- | Fiber Optic Tray for up to 12 splices
- | PLC Splitter capability (small format)
- | Stepped grommet in the back wall of the box (ø 3–14 mm)
- | Pre-fabricated access holes in the back wall of the box (grommet ø 5–9 mm)
- | 4 splittable grommets, each of them for up to 2 patch cords
- | Suitable and equipped for gas block installation (for a microtube with ø 5–14 mm)
- | Optional pole bracket
- | Optional lockable lid
- | Hinged removable lid to facilitate easy access
- | Simple installation



Technical Specifications

Inputs / Outputs (quantity x range)	8 x 1-3 mm, 4 x 3-14 mm, 1 x 3-14 mm
Grommets (type and number)	4x stepped grommet / 4x splittable grommet, 1x stepped grommet
Ingress Protection	IP55
Impact Protection	IK10
UV resistance	Yes
Temperature Range	-40 °C / +70 °C
Material	PC / ABS
Colour	Light Gray (RAL 7035)
Dimensions (H x W x D)	235 x 156 x 45 mm
Weight	0.5 kg
Environment	indoor / outdoor
Number of splices	1 - 12
Number of connectors	1 - 12
Connector type	SC / LC



Ordering codes:

DTC3-FDBII24 (without adapters and pigtails)

Any custom configurations possible; please contact us at sales@datacor-connectivity.ro



Fiber Distribution Box

This fiber distribution box is designed for splicing, connectors connexion and placing the splitter 1:8, 1:16. Box is ideal for FTTH applications.

Main Features

- | Capacity of 16 optical connectors
- | Connector holder SC, SC DUPLEX
- | Extra 2 optional adapter positions for connecting of the input optical cable with splitter, or for measurement over one fiber outgoing from the splitter
- | 1-2 optical splice trays for splices placing
- | 2 × space for routing of incoming and outgoing fibers

Technical Specifications

Inputs / Outputs (quantity x range)	24 x 3 mm, 2 x 8-12 mm
Grommets (type and number)	1 x PG29, 2 x PG13.5
Ingress Protection	IP54
Impact Protection	IK10
UV resistance	Yes
Flammability Degree	V0
Temperature Range	-40 °C / +70 °C
Material	PC / ABS
Colour	Light Gray (RAL 7035)
Dimensions (H x W x D)	319 x 205 x 118 mm
Weight	2 kg
Environment	indoor / outdoor
Number of splices	13 - 24
Number of connectors	13 - 24
Connector type	SC / LC



Ordering codes:

DTC3-FDBII25 (without adapters and pigtails)

Any custom configurations possible; please contact us at sales@datacor-connectivity.ro



Fiber Distribution Box

This fiber distribution box is designed for the placement of 96 SC or 144 LC optical connectors indoors and outdoors.

Main Features

- 4 × splice trays on hinges for 24 splices (total 96 splices)
- Maximum capacity is 192 splices
- Adaptor plate for 96 SC simplex or 36 SC duplex/ LC quad
- Possibility of splitter holder (optional accessories)
- Possibility of lock (optional accessories)
- Plastic rings
- Holder of tension element



Technical Specifications

Inputs / Outputs (quantity x range)	96 × 3 mm, 3 × 8–16 mm
Grommets (type and number)	4× PG29, 3× PG16
Ingress Protection	IP65
Impact Protection	IK08
Flammability Degree	HB
Material	ABS
Colour	Light Gray (RAL 7035)
Dimensions (H x W x D)	500 x 400 x 175 mm
Weight	6 kg

Ordering codes:

DTC3-FDB1126 (without adapters and pigtails)

Any custom configurations possible; please contact us at sales@datacor-connectivity.ro





Outdoor Riser Cable Box

This is an Outdoor Riser Cable Box designed for facades. It allows the passage of an Outdoor Riser Cable and the necessary fibers are pulled out of the cable. For drop cables, there is a separate bushing for up to 11 cable entries. The box contains a fiber management and a Fiber Optic Tray for 12 splices. If necessary, the box can be expanded by an extension frame and additional two Fiber Optic Trays to increase capacity up to 36 splices.

Main Features

- | Maximum capacity 36 splices
- | Possibility to place PLC splitter
- | In-line solution for outdoor riser cable 10–13mm
- | Express port 2 × 7–9mm and 9 × 2–5mm
- | Coverage degree IP54 to EN 60529
- | Impact protection degree IK10 to EN 50102
- | Dimensions 136 × 136 × 46mm
- | Overcoating

Technical Specifications

Inputs / Outputs (quantity x range)	2 × 10–13 mm, 2 × 3–9 mm, 9 × 1.8-5 mm
Grommets (type and number)	2 x in-line grommet, 1 x express port
Ingress Protection	IP54
Impact Protection	IK10
UV resistance	Yes
Flammability Degree	V0
Material	PC / ABS
Colour	Light Gray (RAL 7035)
Dimensions (H x W x D)	136 x 136 x 46 mm
Weight	0.4 kg
Environment	indoor / outdoor
Number of splices	1 - 12 / 13 - 24
Number of connectors	only splicing



Ordering codes:
DTC3-RCB1127

Custom
izable5G
ready

Wall-mounted Optical Distribution Box

This wall mounted fiber optical box is designed for the placement of up to 48 optical connectors indoor. Optical cables can be lead in/out from upsite or downsite. Adapters plate is selectable and splicing tray is removable and suitable for field operation and maintenance of up to 24 splices (heat shrink or crimp).

Main Features

- | Maximum capacity 24 SC or 48 LC connectors
- | Optional splice tray
- | Placement of optical fibre reserves - 2 ranging eyes
- | Cable holders
- | Rubber bushings
- | Two lockable doors – two different locks
- | Outdoor version available upon request



Technical Specifications

Inputs / Outputs (quantity x range)	4 x 9-24 mm
Grommets (type and number)	4 x rubber grommet ø30 mm
Material	painted steel sheet
Colour	Light Gray (RAL 7035)
Dimensions (H x W x D)	421 x 316 x 64 mm
Weight	3.5 kg
Environment	indoor
Number of splices	1 - 12 / 13 - 24 / 25 - 48
Number of connectors	1 - 12 / 13 - 24 / 25 - 48
Connector type	SC / LC

Ordering codes:

DTC3-FDBII28 (without adapters and pigtails)

Any custom configurations possible; please contact us at sales@datacor-connectivity.ro



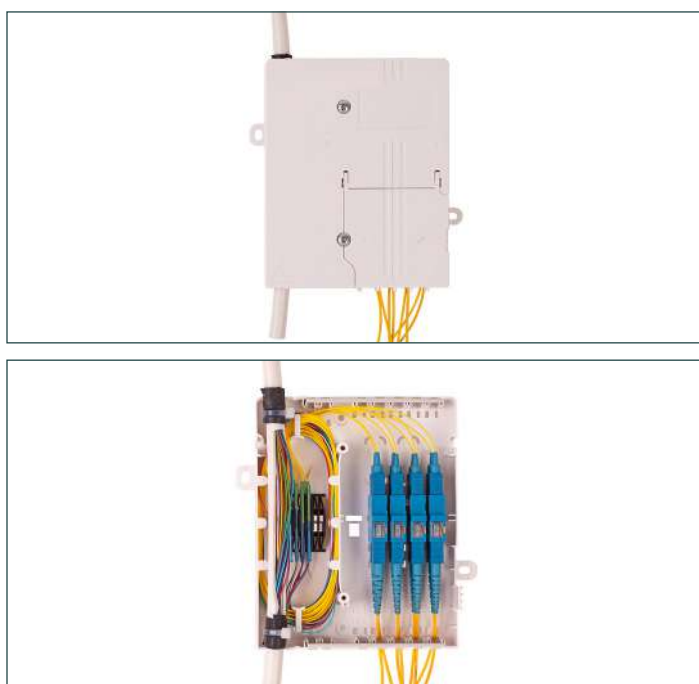


Fiber Optic Box

This wall-mounted Fiber Optic Box finds its application as a floor or a main fiber distribution box in apartment buildings / MDUs or single-family houses. It supports all cable applications (riser cables, buffered tubes, microtubes and ribbon cables), and it can be used for GPON networks with a pre-installed splitter. Its unique compact design and factory connectorized options help reduce assembly time and installation costs by up to 50 %.

Main Features

- | Enables termination of connectors and splicing of optical fibers
- | It can be pre-installed with adapters, pigtails or splitters from manufacturing
- | Compact size makes installation in small spaces possible
- | Two screw-lock doors – a larger one for a technician with professional skills, who works with splitters, splices and pigtails, and a smaller one for a technician without professional skills, who connects customer drop cables
- | Capacity of up to 14 splices
- | Capacity of up to 12 × SC / 24 × LC connector (in case of a pre-connected cable)
- | Capacity of up to 10 × SC / 12 × LC connector (in case of termination by splicing on pigtails)
- | Integrated holder to support 2 splices in the base of the box, possibility to place a holder for 12 splices
- | PLC Splitter capability (1:2, 1:4, 1:8, 1:16 with LC connectors)
- | Multiple cable or tube entry ports placed on all sides of the box increasing installation flexibility
- | Support for vertical midspan (loop-through) cable
- | Pre-moulded holes in the base for routing a cable through a wall



Technical Specifications

Grommets (type and number)	cable inlet
Ingress Protection	IP20
Impact Protection	IK08
Flammability Degree	V0
Material	PC / ABS
Colour	White (RAL 9003)
Dimensions (H x W x D)	150 x 140 x 40 mm
Weight	0.2 kg
Environment	indoor
Number of splices	1 - 12 / 13 - 24
Number of connectors	1 - 12 / 13 - 24
Connector type	SC / LC

Ordering codes:

DTC3-FOB1129 (without adapters and pigtails)

Any custom configurations possible; please contact us at sales@datacor-connectivity.ro



Fiber Optic Box

The Fiber Optic Box is designed as a simple box for indoor installation. It supports especially FTTH networks. It can be used for storage of a pre-connectorized cable or blown cable reserves, which can be spliced when connecting the customer. It can also be used as a distribution box in small buildings or as a floor box.

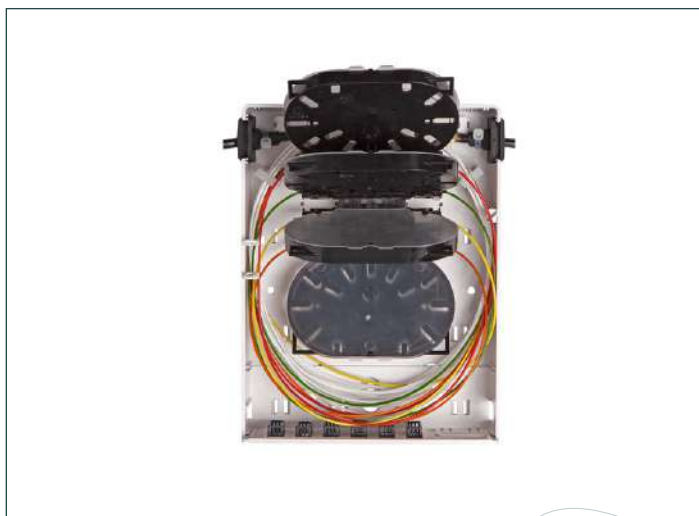
Main Features

- | Easy installation
- | Wide portfolio of accessories – see datasheet below
- | Flat base with mounting holes
- | Space for cable reserve before connecting customer
- | Possibility to use the box for splicing or patching
- | Two positions for adaptor plate
- | Capacity up to 6 × SC duplex, or 6 × LC quad
- | Gradiated rubber gland for cable Ø 3-10mm (on each side)
- | Breakable outputs on back side (connection through the wall directly to customer)
- | Possibility to use loop-through cable
- | Max. capacity 24 splices, for fibres G.652d and G.657a, b)
- | Possibility to place PLC splitter
- | Coverage degree IP 2



Technical Specifications

Inputs / Outputs (quantity x range)	1 x 3-10 m
Grommets (type and number)	1 x stepped grommet
Ingress Protection	IP20
Impact Protection	IK05
Flammability Degree	V0
Material	PC / ABS
Colour	White (RAL 9003)
Dimensions (H x W x D)	205 x 157 x 60 mm
Weight	0.3 kg
Environment	indoor
Number of splices	1 - 12 / 13 - 24 / 25 - 48
Number of connectors	1 - 12 / 13 - 24
Connector type	SC / LC



Ordering codes:

DTC3-FOB1130 (without adapters and pigtails)

Any custom configurations possible; please contact us at sales@datacor-connectivity.ro

Fiber Access Terminal Box

This Fiber Access Terminal Box is designed to protect and accommodate fiber optic splices within an office, home or residential environment. It is installed indoors on a wall without using the special equipment.

Main Features

- | Capacity of 2 adapters for subscriber output and 5 drop wire inputs
- | Capacity of 2 splices in tray (by mechanical or fusion)
- | Designed for pre-connectorized system to store fiber jumper
- | Fiber inputs ports through the back of the base
- | Can be easily installed on any flat vertical wall
- | The tray design allows for perfect routing and control of fibers
- | Use for fibers G.652d, G.657

Technical Specifications

Environment	indoor
Number of splices	1 -12
Number of connectors	1 -12
Connector type	SC



Ordering codes:
DTC3-FAT1131

Our certifications:



TUV ISO 9001



CDCDP
Certified Data Center
Design Professional



Accredited Tier Designer
from Uptime Institute

datacor®

CONNECTIVITY



Parc Industrial Bistrița Sud
str. Parc Industrial 7, Viișoara, Bistrița-Năsăud



sales@datacor-connectivity.ro



+40 263 231 557



www.datacor-connectivity.ro