



Fiber Optic Assemblies Product Catalogue



STAY CONNECTED!
www.datacor-connectivity.ro

Datacor.

For 19 years, we have been helping people communicate easier.

Datacor is a Romanian company, with 19 years of experience in innovative communications solutions, security and electrical solutions, operating in the office, retail and industrial segments. From 2002 until now, the company has grown continuously, reaching a team of 100 people and a turnover of 9 million euros.

We know fiber.

We've been working with fiber optics for 19 years and we believe that the future telecommunication networks can only be supported by fiber. No other medium offers the bandwidth capacity and speed of transmission offered by fiber optics.

This is why we decided to invest in a production facility for fiber optic connectivity. We want our products to be a part of the digitalization of Europe. In our state-of-the-art production line we manufacture high quality connectivity solutions. We focus on delivering fast lead times and customized solutions for our clients.



19 years of activity

This year, we celebrate 19 years of Datacor, a time in which we've become one of the main providers of communications and security infrastructure solutions in the country.

9 million turnover

We continuously invest in the development of human resources, the digitalization of the company and in the automation of business processes.

100 employees

At Datacor, we think that people are the most important asset of our company. We always do our best to ensure that our team is made up of the best professionals in the field.

5 offices

We have a presence throughout the country: Bistrita, where the administrative and logistical HQ is located, Bucharest, the secondary HQ and Cluj, as well as service centers in Iași and Timișoara.

Our people.

We believe that the value of our company lies in the people who represent it.



Călin Brehar
*Chief Production Officer
Manager*

Experienced manager in tele-
com business industry. Călin
oversees production opera-
tions.



Alexandru Dorobanțu
Chief Technical

Highly skilled in telecommuni-
cations.
Young and passionate about
technology, Alex develops the
product line.



Raul Marina
Product Designer

Raul works closely with the
production team and turns
problems into working solu-
tions.



Contents

Fiber Pigtails

6

Fiber pigtails parameters

7

Connector type: ST

8

Connector type: SC

8

Connector type: LC

9

Connector type: FC

9

Connector type: E2000

9

Pigtail-Sets

10

Custom Fiber pigtails

11

Fiber Patch Cords

12

Fiber patch cords parameters

13

Connector type: ST

14

Connector type: SC

14

Connector type: LC

15

Connector type: FC

15

Connector type: E2000

15

Adaptor Cords

16

Fiber Duplex Patch Cords

17

Fiber duplex patch cords parameters

18

Connector type: ST

19

Connector type: SC

19

Connector type: LC

20

Connector type: FC

20

Connector type: E2000

20

Duplex Adaptor Cords

21

Custom Simplex and Duplex Patch Cords

22

Fiber Pigtails



Fiber pigtails parameters

Fiber type	OS2	OM2	OM3	OM4
Mechanical Specifications				
Fire load	0.15 MJ/m	0.016 MJ/m	0.016 MJ/m	0.016 MJ/m
Min. bend radius installation	30 mm	7.5 mm	7.5 mm	7.5 mm
Min. bend radius operation	30 mm	7.5 mm	7.5 mm	7.5 mm
Nominal outer diameter	0.9 mm			
General Specifications				
Fiber Count	1			
Fiber Core Diameter	9 µm	50 µm	50 µm	50 µm
Fiber type	SM 9/125 OS2	50 µm MM	50 µm MM	50 µm MM
Outer Jacket Colour	Yellow	Green	Turquoise	Turquoise
Fiber Colour	Natural			
Environment	Indoor			
Cable type	Tight-buffered			
Weight	0.95 kg/km			
Application	Splicing			
Temperature range				
storage	-25°C to 70°C			
installation	-5°C to 50°C			
operation	-20°C to 60°C			
Optical characteristics				
Serial 1 gigabit ethernet	5000 MHz*km	700/500 MHz*km	1100/600 MHz*km	1100/600 MHz*km
Serial 10 gigabit ethernet	10000/40000 MHz*km	150 MHz*km	300/333 MHz*km	550 MHz*km
Typical attenuation	0.38 dB/km / 0.38 dB/km / 0.25 dB/km	2.4 dB/km / 0.8 dB/km	2.4 dB/km / 0.8 dB/km	2.4 dB/km / 0.8 dB/km
Wavelengths	1310 nm / 1383 nm / 1550 nm	850 nm / 1300 nm	850 nm / 1300 nm	850 nm / 1300 nm
Connector parameters				
Connector types	LC, SC, ST, FC, E2000			
Insertion Loss (acc. IEC 61300-3-4 method B)	<0.25dB (@1310/1550 nm) <0.25dB (@850/1300 nm)			
Return Loss (acc. IEC 61300-3-6)	>50dB(UPC)/>60dB(APC) @1310/1550 nm >30dB @850/1300 nm			

- Fibre pigtails are used in permanent connections between patch panels and incoming cables / single blown fibres.
- Pigtails are preconstructed with connectors. Our connector options include small form factors such as LC or E2000 as well as SC, FC and ST.
- We are able to offer this product in many types of configurations with various lengths and multiple colours for easier identification.
- Easy to strip up to 1000 mm.
- Tight buffers allow easy and direct field connectorization.



Connector type: ST

Order no.	Fiber type	Connector type	Jacket colour	Length (m)
DTCPG915BMxPxxx	E9/125/250 OS2	ST/PC	Yellow	1; 1,5; 2; 2,5; 3
DTCPG22FBMxPxxx	G50/125/250 OM2	ST/MM	Green	1; 1,5; 2; 2,5; 3



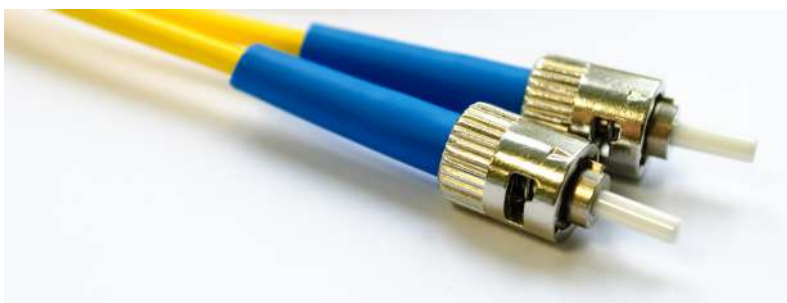
Connector type: SC

Order no.	Fiber type	Connector type	Jacket colour	Length (m)
DTCPG911BBxPxxx	E9/125/250 OS2	SC/PC	Yellow	1; 1,5; 2; 2,5; 3
DTCPG91ABGxPxxx	E9/125/250 OS2	SC/APC	Yellow	1; 1,5; 2; 2,5; 3
DTCPG22EBExPxxx	G50/125/250 OM2	SC/MM	Green	1; 1,5; 2; 2,5; 3
DTCPG36EBExPxxx	G50/125/250 OM3	SC/MM	Turquoise	1; 1,5; 2; 2,5; 3
DTCPG46EBExPxxx	G50/125/250 OM4	SC/MM	Turquoise	1; 1,5; 2; 2,5; 3



Connector type: LC

Order no.	Fiber type	Connector type	Jacket colour	Length (m)
DTCPG912BBxPxxx	E9/125/250 OS2	LC/PC	Yellow	1; 1,5; 2; 2,5; 3
DTCPG91BBGxPxxx	E9/125/250 OS2	LC/APC	Yellow	1; 1,5; 2; 2,5; 3
DTCPG22EBExPxxx	G50/125/250 OM2	LC/MM	Green	1; 1,5; 2; 2,5; 3
DTCPG36EBExPxxx	G50/125/250 OM3	LC/MM	Turquoise	1; 1,5; 2; 2,5; 3
DTCPG46EBExPxxx	G50/125/250 OM4	LC/MM	Turquoise	1; 1,5; 2; 2,5; 3



Connector type: FC

Order no.	Fiber type	Connector type	Jacket colour	Length (m)
DTCPG914BBxPxxx	E9/125/250 OS2	FC/PC	Yellow	1; 1,5; 2; 2,5; 3
DTCPG91DBGxPxxx	E9/125/250 OS2	FC/APC	Yellow	1; 1,5; 2; 2,5; 3



Connector type: E2000

Order no.	Fiber type	Connector type	Jacket colour	Length (m)
DTCPG913BBxPxxx	E9/125/250 OS2	E2000/PC	Yellow	1; 1,5; 2; 2,5; 3
DTCPG91CBGxPxxx	E9/125/250 OS2	E2000/APC	Yellow	1; 1,5; 2; 2,5; 3

Pigtail-Sets

Description	Pigtails	Housing Colour	Length (m)
Pigtail-Set	6 or 12 x E9/125/250, OS2, ST	Metal	1; 1,5; 2; 2,5; 3
Pigtail-Set	6 or 12 x G50/125/250, OM2, ST	Metal	1; 1,5; 2; 2,5; 3
Pigtail-Set	6 or 12 x E9/125/250, OS2, SC	Blue	1; 1,5; 2; 2,5; 3
Pigtail-Set	6 or 12 x E9/125/250, OS2, SC/APC	Green	1; 1,5; 2; 2,5; 3
Pigtail-Set	6 or 12 x G50/125/250, OM2, SC	Beige	1; 1,5; 2; 2,5; 3
Pigtail-Set	6 or 12 x G50/125/250, OM3, SC	Beige	1; 1,5; 2; 2,5; 3
Pigtail-Set	6 or 12 x G50/125/250, OM4, SC	Beige	1; 1,5; 2; 2,5; 3
Pigtail-Set	6 or 12 x E9/125/250, OS2, LC	Blue	1; 1,5; 2; 2,5; 3
Pigtail-Set	6 or 12 x E9/125/250, OS2, LC/APC	Green	1; 1,5; 2; 2,5; 3
Pigtail-Set	6 or 12 x G50/125/250, OM2, LC	Beige	1; 1,5; 2; 2,5; 3
Pigtail-Set	6 or 12 x G50/125/250, OM3, LC	Beige	1; 1,5; 2; 2,5; 3
Pigtail-Set	6 or 12 x G50/125/250, OM4, LC	Beige	1; 1,5; 2; 2,5; 3
Pigtail-Set	6 or 12 x E9/125/250, OS2, FC	Blue	1; 1,5; 2; 2,5; 3
Pigtail-Set	6 or 12 x E9/125/250, OS2, FC/APC	Green	1; 1,5; 2; 2,5; 3
Pigtail-Set	6 or 12 x E9/125/250, OS2, E2000	Blue	1; 1,5; 2; 2,5; 3
Pigtail-Set	6 or 12 x E9/125/250, OS2, E2000/APC	Green	1; 1,5; 2; 2,5; 3

- We are offering sets of pigtails in number of 6 or 12.
- Other type of pigtail sets can be available on request.



Custom Fiber pigtails

DTC PG 9 1 1 B B B P 015

Company identifier		Product type		Fiber type		Jacket colour		Connector type		Boot type		Connector colour		Boot colour		Series		Length	
DTC	Datacor	PG	Pigtail	9	OS2	1	Yellow	1	SC/PC	B	Mini Boot 0.9 mm	B	Blue	B	Blue	S	Standard	010	1.0 m
				1	OM1	2	Green	A	SC/APC			G	Green	G	Green	P	Premium	015	1.5 m
				2	OM2	3	Aqua	2	LC/PC			A	Aqua	A	Aqua			020	2.0 m
				3	OM3	4	Ivory	B	LC/APC			E	Beige	E	Beige			025	2.5 m
				4	OM4	5	Orange	3	E2000/PC			L	Black	L	Black			030	3.0 m
						6	Turquoise	C	E2000/APC			W	White	W	White				
						7	Blue	4	FC/PC			R	Red	R	Red				
								D	FC/APC			M	Metal Housing	T	Light Gray				
								5	ST/PC										
								E	SC/MM										
								6	LC/MM										
								F	ST/MM										

***DTC-PG-91-1BBB-P015**

*Datacor, Pigtail, OS2 - Yellow, SC/PC - Mini Boot, Blue Connector, Blue Boot, Premium Series, 1.5 m

Fiber Patch Cords



Fiber patch cords parameters

Fiber type

OS2

Mechanical Specifications

Crush resistance	1000 N/10 cm
Fire load	0.08 MJ/m
Min. bend radius installation	30 mm
Min. bend radius operation	30 mm
Nominal outer diameter	2.0 mm

General Specifications

Fiber Count	1
Fiber Core Diameter	9 μ m
Fiber type	SM 9/125 OS2
Outer Jacket Colour	Yellow
Tight Buffer Colour	White
Environment	Indoor
Cable type	Tight-buffered
Weight	4.1 kg/km
Application	Indoor Horizontal

Temperature range

storage	-25°C to 70°C
installation	-5°C to 50°C
operation	-20°C to 60°C

Optical characteristics

Serial 1 gigabit ethernet	5000 MHz*km
Serial 10 gigabit ethernet	10000/40000 MHz*km
Typical attenuation	0.38 dB/km / 0.38 dB/km / 0.25 dB/km
Wavelengths	1310 nm / 1383 nm / 1550 nm

Connector parameters

Connector types	LC, SC, ST, FC, E2000
Insertion Loss (acc. IEC 61300-3-4 method B)	<0.25dB (@1310/1550 nm) <0.25dB (@850/1300 nm)
Return Loss (acc. IEC 61300-3-6)	>50dB(UPC)/>60dB(APC) @1310/1550 nm >30dB @850/1300 nm

- Patch cords are used for non-permanent connections between patch-panels, transmission equipment.
- Patch cords provide easy installation in space-constrained areas and can eliminate the need for fan-out kits.
- We are able to offer this product in many types of configurations with various lengths of fiber and different connectors.
- **Small diameter and bend radius.**
- **TB3 tight-bufferd construction;**



Connector type: ST

Part No.	Connector type	Fiber type	Housing Colour	Length (m)
DTC-PC1-291-54Mx-54Mx-Pxxx	ST	E9/125/250, OS2	Metal	1; 1.5; 2; 2.5; 3; 5; 10



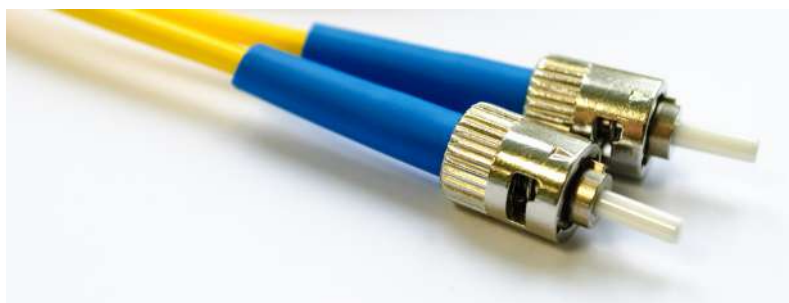
Connector type: SC

Part No.	Connector type	Fiber type	Housing Colour	Length (m)
DTC-PC1-291-14Bx-14Bx-Pxxx	SC	E9/125/250, OS2	Blue	1; 1.5; 2; 2.5; 3; 5; 10
DTC-PC1-291-A4Gx-A4Gx-Pxxx	SC/APC	E9/125/250, OS2	Green	1; 1.5; 2; 2.5; 3; 5; 10



Connector type: LC

Part No.	Connector type	Fiber type	Housing Colour	Length (m)
DTC-PC1-291-24Bx-24Bx-Pxxx	LC	E9/125/250, OS2	Blue	1; 1.5; 2; 2.5; 3; 5; 10
DTC-PC1-291-B4Gx-B4Gx-Pxxx	LC/APC	E9/125/250, OS2	Green	1; 1.5; 2; 2.5; 3; 5; 10



Connector type: FC

Part No.	Connector type	Fiber type	Housing Colour	Length (m)
DTC-PC1-291-44Bx-44Bx-Pxxx	FC	E9/125/250, OS2	Blue	1; 1.5; 2; 2.5; 3; 5; 10
DTC-PC1-291-D4Gx-D4Gx-Pxxx	FC/APC	E9/125/250, OS2	Green	1; 1.5; 2; 2.5; 3; 5; 10

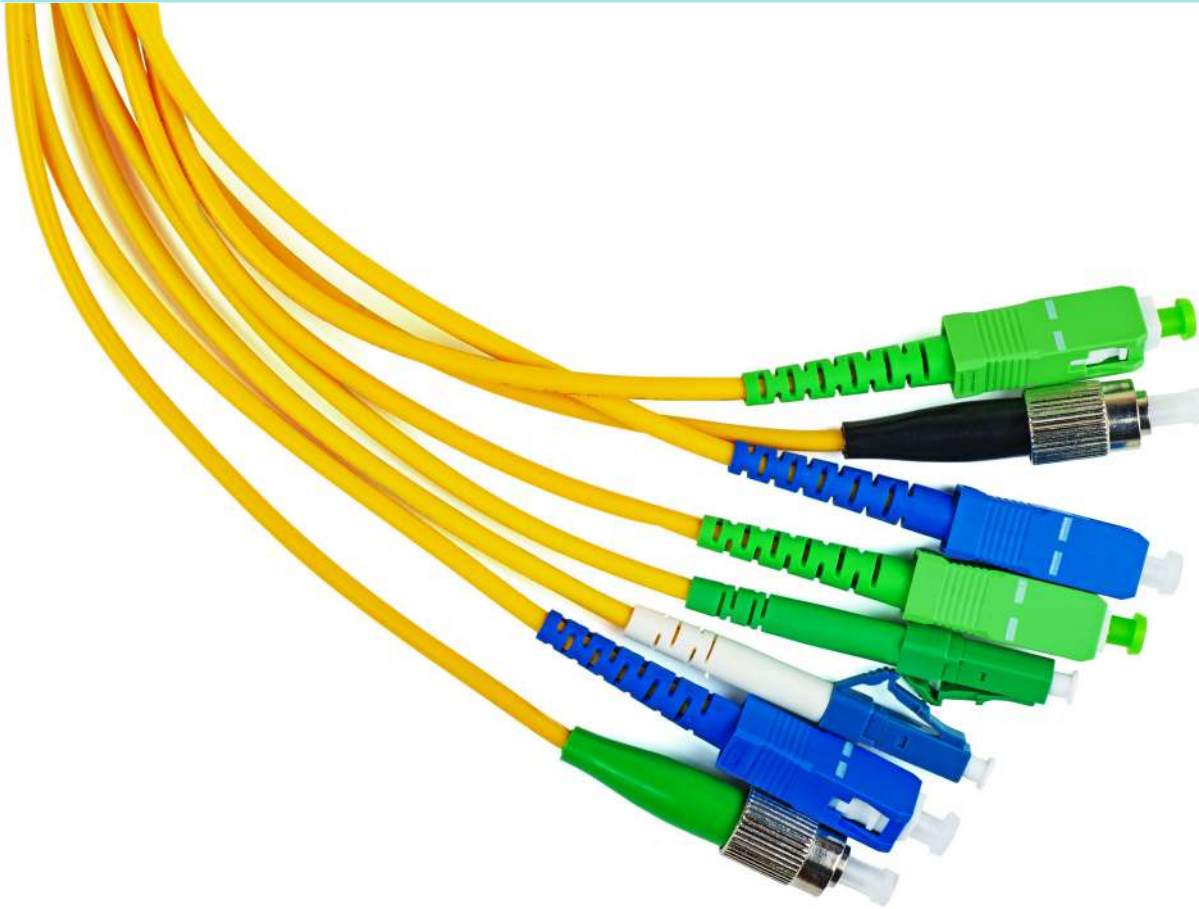


Connector type: E2000

Part No.	Connector type	Fiber type	Housing Colour	Length (m)
DTC-PC1-291-34Bx-34Bx-Pxxx	E2000	E9/125/250, OS2	Blue	1; 1.5; 2; 2.5; 3; 5; 10
DTC-PC1-291-C4Gx-C4Gx-Pxxx	E2000/APC	E9/125/250, OS2	Green	1; 1.5; 2; 2.5; 3; 5; 10

Adaptor Cords

Part No.	Connector type		Fiber type	Housing Colour		Length (m)
	Side A	Side B		Side A	Side B	
DTC-PC1-291-14Bx-A4Gx-Pxxx	SC	SC/APC	E9/125/250, OS2	Blue	Green	1; 1.5; 2; 2.5; 3; 5; 10
DTC-PC1-291-14Bx-44Bx-Pxxx	SC	FC	E9/125/250, OS2	Blue	Blue	1; 1.5; 2; 2.5; 3; 5; 10
DTC-PC1-291-24Bx-B4Gx-Pxxx	LC	LC/APC	E9/125/250, OS2	Blue	Green	1; 1.5; 2; 2.5; 3; 5; 10
DTC-PC1-291-B4Gx-A4Gx-Pxxx	LC/APC	SC/APC	E9/125/250, OS2	Green	Green	1; 1.5; 2; 2.5; 3; 5; 10
DTC-PC1-291-24Bx-14Bx-Pxxx	LC	SC	E9/125/250, OS2	Blue	Blue	1; 1.5; 2; 2.5; 3; 5; 10
DTC-PC1-291-24Bx-A4Bx-Pxxx	LC	SC/APC	E9/125/250, OS2	Blue	Green	1; 1.5; 2; 2.5; 3; 5; 10



Fiber Duplex Patch Cords



Fiber duplex patch cords parameters

Fiber type	OS2	OM2	OM3	OM4
Mechanical Specifications				
Fire load	0.30 MJ/m	0.11 MJ/m	0.11 MJ/m	0.11 MJ/m
Min. bend radius installation	30 mm			
Min. bend radius operation	10 mm			
Crush resistance	1000 N/10 cm			
Nominal outer diameter	2.0 x 4.1 mm	1.8 x 3.7 mm	1.8 x 3.7 mm	1.8 x 3.7 mm
General Specifications				
Fiber Count	2			
Fiber Core Diameter	9 µm	50 µm	50 µm	50 µm
Fiber type	SM 9/125 OS2	50 µm MM	50 µm MM	50 µm MM
Outer Jacket Colour	White	Orange	Turquoise	Turquoise
Tight Buffer Colour	Blue, Orange			
Environment	Indoor			
Cable type	Zipcord Tight-Buffered			
Weight	OS2 - 8.5 kg/km / OM2, OM3, OM 4 - 6kg/km			
Application	Indoor Horizontal			
Temperature range				
storage	-25°C to 70°C			
installation	-5°C to 50°C			
operation	-20°C to 60°C			
Optical characteristics				
Serial 1 gigabit ethernet	-	700/500 MHz*km	1100/600 MHz*km	1100/600 MHz*km
Serial 10 gigabit ethernet	-	150 MHz*km	300/333 MHz*km	550 MHz*km
Maximum attenuation	0.34 dB/km / 0.34 dB/km / 0.20 dB/km	2.4 dB/km / 0.8 dB/km	2.4 dB/km / 0.8 dB/km	2.4 dB/km / 0.8 dB/km
Wavelengths	1310 nm / 1550 nm	850 nm / 1300 nm	850 nm / 1300 nm	850 nm / 1300 nm
Connector parameters				
Connector types	LC, SC, ST, FC, E2000			
Insertion Loss (acc. IEC 61300-3-4 method B)	<0.25dB (@1310/1550 nm) <0.25dB (@850/1300 nm)			
Return Loss (acc. IEC 61300-3-6)	>50dB(UPC)/>60dB(APC) @1310/1550 nm >30dB @850/1300 nm			

- Patch cords are used for non-permanent connections between patch-panels, transmission equipment.
- Patch cords provide easy installation in space-constrained areas and can eliminate the need for fan-out kits.
- We are able to offer this product in many types of configurations with various lengths of fiber and different connectors.
- **Small diameter and bend radius.**
- **TB3 tight-buffered construction;**



Connector type: ST

Part No.	Connector type	Fiber type	Housing Colour	Length (m)
DTC-PC2-825-54Mx-54Mx-Pxxx	ST	G50/125/250, OM2	Metal	1; 1.5; 2; 2.5; 3; 5; 10



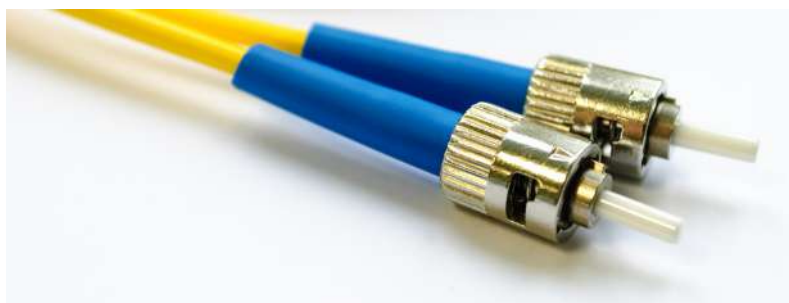
Connector type: SC

Part No.	Connector type	Fiber type	Housing Colour	Length (m)
DTC-PC2-297-14Bx-14Bx-Pxxx	SC	E9/125/250, OS2	Blue	1; 1.5; 2; 2.5; 3; 5; 10
DTC-PC2-297-A4Gx-A4Gx-Pxxx	SC/APC	E9/125/250, OS2	Green	1; 1.5; 2; 2.5; 3; 5; 10
DTC-PC2-825-E4Ex-E4Ex-Pxxx	SC	G50/125/250, OM2	Beige	1; 1.5; 2; 2.5; 3; 5; 10
DTC-PC2-836-E4Ex-E4Ex-Pxxx	SC	G50/125/250, OM3	Beige	1; 1.5; 2; 2.5; 3; 5; 10
DTC-PC2-846-E4Ex-E4Ex-Pxxx	SC	G50/125/250, OM4	Beige	1; 1.5; 2; 2.5; 3; 5; 10



Connector type: LC

Part No.	Connector type	Fiber type	Housing Colour	Length (m)
DTC-PC2-297-24Bx-24Bx-Pxxx	LC	E9/125/250, OS2	Blue	1; 1.5; 2; 2.5; 3; 5; 10
DTC-PC2-297-B4Gx-B4Gx-Pxxx	LC/APC	E9/125/250, OS2	Green	1; 1.5; 2; 2.5; 3; 5; 10
DTC-PC2-825-64Ex-64Ex-Pxxx	LC	G50/125/250, OM2	Beige	1; 1.5; 2; 2.5; 3; 5; 10
DTC-PC2-836-64Ex-64Ex-Pxxx	LC	G50/125/250, OM3	Beige	1; 1.5; 2; 2.5; 3; 5; 10
DTC-PC2-846-64Ex-64Ex-Pxxx	LC	G50/125/250, OM4	Beige	1; 1.5; 2; 2.5; 3; 5; 10



Connector type: FC

Part No.	Connector type	Fiber type	Housing Colour	Length (m)
DTC-PC2-297-44Bx-44Bx-Pxxx	FC	E9/125/250, OS2	Blue	1; 1.5; 2; 2.5; 3; 5; 10
DTC-PC2-297-D4Gx-D4Gx-Pxxx	FC/APC	E9/125/250, OS2	Green	1; 1.5; 2; 2.5; 3; 5; 10



Connector type: E2000

Part No.	Connector type	Fiber type	Housing Colour	Length (m)
DTC-PC2-297-34Bx-34Bx-Pxxx	E2000	E9/125/250, OS2	Blue	1; 1.5; 2; 2.5; 3; 5; 10
DTC-PC2-297-C4Gx-C4Gx-Pxxx	E2000/APC	E9/125/250, OS2	Green	1; 1.5; 2; 2.5; 3; 5; 10

Duplex Adaptor Cords

Part No.	Connector type		Fiber type	Housing Colour		Length (m)
	Side A	Side B		Side A	Side B	
DTC-PC2-297-14Bx-A4Gx-Pxxx	SC	SC/APC	E9/125/250, OS2	Blue	Green	1; 1.5; 2; 2.5; 3; 5; 10
DTC-PC2-297-14Bx-44Mx-Pxxx	SC	FC	E9/125/250, OS2	Blue	Metal	1; 1.5; 2; 2.5; 3; 5; 10
DTC-PC2-297-24Bx-14Bx-Pxxx	LC	SC	E9/125/250, OS2	Blue	Blue	1; 1.5; 2; 2.5; 3; 5; 10
DTC-PC2-297-24Bx-A4Gx-Pxxx	LC	SC/APC	E9/125/250, OS2	Blue	Green	1; 1.5; 2; 2.5; 3; 5; 10
DTC-PC2-297-24Bx-44Bx-Pxxx	LC	FC	E9/125/250, OS2	Blue	Blue	1; 1.5; 2; 2.5; 3; 5; 10
DTC-PC2-825-E4Ex-F4Mx-Pxxx	SC	ST	G50/125/250, OM2	Blue	Metal	1; 1.5; 2; 2.5; 3; 5; 10
DTC-PC2-825-64Ex-F4Mx-Pxxx	LC	ST	G50/125/250, OM2	Blue	Metal	1; 1.5; 2; 2.5; 3; 5; 10
DTC-PC2-825-64Ex-E4Ex-Pxxx	LC	SC	G50/125/250, OM2	Blue	Blue	1; 1.5; 2; 2.5; 3; 5; 10
DTC-PC2-836-64Ex-E4Ex-Pxxx	LC	SC	G50/125/250, OM3	Blue	Blue	1; 1.5; 2; 2.5; 3; 5; 10
DTC-PC2-846-64Ex-E4Ex-Pxxx	LC	SC	G50/125/250, OM4	Blue	Blue	1; 1.5; 2; 2.5; 3; 5; 10



Custom Simplex and Duplex Patch Cords

DTC PC 1 2 9 1 2 4 B L

Company identifier		Product type		Construction		Cable diameter		Fiber type		Jacket colour		Connector A type		Boot A type		Connector A colour		Boot A colour	
DTC	Datacor	PC	Patch Cord	1	Simplex	8	1.8	9	OS2	1	Yellow	1	SC/PC	B	Mini Boot 0.9 mm	B	Blue	B	Blue
				2	Duplex	2	2.0	1	OM1	2	Green	A	SC/APC	C	Mini Boot 2.0 mm	G	Green	G	Green
		3		3	3.0	2	OM2	3	Aqua	2	LC/PC	D	Mini Boot 3.0 mm	A	Aqua	A	Aqua		
		3		3		3	OM3	4	Ivory	B	LC/APC	1	BTW Boot	E	Beige	E	Beige		
		4		4		4	OM4	5	Orange	3	E2000/PC	4	2 mm Round	L	Black	L	Black		
		6		6		6		6	Turquoise	C	E2000/APC	5	2 mm Boot Short	W	White	W	White		
		7		7		7		7	White	4	FC/PC	6	3 mm Boot	R	Red	R	Red		
		D		D		D		D		D	FC/APC	7	Flex-Angle 2 mm	M	Metal Housing	T	Light Gray		
		E		E		E		E		E	ST/PC	9	Flex-Angle 3 mm						
		F		F		F		F		F	LC/MM								

B 4 G G P 030

Connector B type		Boot B type		Connector B colour		Boot B colour		Series		Length	
1	SC/PC	B	Mini Boot 0.9 mm	B	Blue	B	Blue	S	Standard	010	1.0 m
A	SC/APC	C	Mini Boot 2.0 mm	G	Green	G	Green	P	Premium	015	1.5 m
2	LC/PC	D	Mini Boot 3.0 mm	A	Aqua	A	Aqua			020	2.0 m
B	LC/APC	1	BTW Boot	E	Beige	E	Beige			025	2.5 m
3	E2000/PC	4	2 mm Round	L	Black	L	Black			030	3.0 m
C	E2000/APC	5	2 mm Boot Short	W	White	W	White			050	5.0 m
4	FC/PC	6	3 mm Boot	R	Red	R	Red			100	10.0 m
D	FC/APC	7	Flex-Angle 2 mm	M	Metal Housing	T	Light Gray				
5	ST/PC	9	Flex-Angle 3 mm								
E	SC/MM										
6	LC/MM										
F	ST/MM										

***DTC-PC1-291-24BL-B4GG-P030**

*Datacor, Patch Cord Simplex, 2 mm, OS2 - Yellow, connector A: LC/PC - 2 mm Boot, Blue Connector, Black Boot; connector B: LC/APC - 2 mm Boot, Green Connector, Green Boot; Premium Series, 3.0 m

Our Certifications



TUV ISO 9001



CDCDP
Certified Data Center
Design Professional



Accredited Tier Designer
from Uptime Institute

datacor®

CONNECTIVITY



Parc Industrial Bistrița Sud
Str. Parc Industrial 7, Viișoara, Bistrița-Năsăud



sales@datacor-connectivity.ro



0263 231 557



www.datacor-connectivity.ro

STAY CONNECTED!

Datacor Connectivity 2021